



Certificate
519569

This Diamond Foundry created diamond
was graded by a GIA Gemologist
on the GIA Diamond Grading Scale.

GIA DIAMOND GRADING SCALE

GIA COLOR SCALE	GIA CLARITY SCALE	GIA CUT SCALE
COLORLESS	FLAWLESS	EXCELLENT
D		
E		
F		
NEAR COLORLESS	INTERNALLY FLAWLESS	VERY GOOD
G		
H		
I		
VERY LIGHT	VERY VERY SLIGHTLY INCLUDED	GOOD
J		
K		
L		
	VERY SLIGHTLY INCLUDED	FAIR
M		
O		
P		
	SLIGHTLY INCLUDED	POOR
R		
S		
T		
	INCLUDED	
U		
V		
W		
X		
Y		
Z		

GIA GEMOLOGIST GRADING REPORT

Shape	Brilliant Round	Country of Origin	United States
Date	04-16-2021	Inscription	DF519569
DIAMOND PROPORTIONS		DIAMOND GRADES - THE 4CS	
Depth	61.3%	Carat Weight	1.55
Crown Height	14.5%	Color Grade	I
Crown Angle	34°	Clarity Grade	VS1
Pavilion Height	43.5%	Cut Grade	Ideal+Hearts
Pavilion Angle	41°	ADDITIONAL GRADING	
Table Diameter	57%	Polish	Excellent
Girdle	Medium to Slightly Thick	Symmetry	Excellent
Measurements	7.48 x 7.42 x 4.57mm	Fluorescence	None

GIA GEMOLOGIST

Gemological Institute of America

Awards this Diploma to
Justin Kongsinsap

who has successfully met the requirements, thus earning recognition as a
Graduate Gemologist

Issued by the Board of Governors, upon recommendation of the faculty,
with all the rights and privileges belonging thereto.

Given at the Robert Mouawad Campus, 5345 Armada Drive
Carlsbad, California, on March 19, 2004



William C. Porcopia
President of the Institute
Brook Ellis
Vice President of Education

CERTIFICATION

This Certificate is guaranteed by Diamond Foundry:

In the unlikely case that your diamond turns out to not meet or exceed a 4C grade stated in this Certificate, Diamond Foundry shall, at its option: Accept the return of the diamond and provide you with a refund of the full purchase price; or replace the diamond with a diamond that meets or exceeds each of the characteristics warranted.

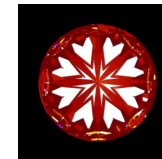
If you make a claim under this Warranty, you must allow Diamond Foundry to: examine the original copy of the Certificate; try and resolve your claim amicably; inspect the jewelry and any gemological evaluation on which you base your claim; remove the diamond from the jewelry for gemological examination. Diamonds must be graded as loose stones by an internationally recognized diamond grading lab. Since the diamond grading process is a subjective science, your claim is only warranted if the internationally recognized diamond grading laboratory grades your diamond at least two grades lower in color and/or clarity.

The condition of the diamond will be determined by examination under no greater than 10x magnification and by standard gemological techniques. The accuracy of angles and linear measurements will be determined by the following tolerances of $\pm 0.2^\circ$ and ± 0.02 millimeters.

This Warranty remains in effect in perpetuity with the original purchase proof. It covers the lack of conformity of the diamond with the 4C grades stated on this certificate at the time of sale. It does not cover damage to the diamond that occurs after delivery including normal wear & tear, cuts or scratches, consequential or incidental damages provided or allowed by an insurance coverage. This Warranty is not transferable and only applies to the original purchaser of the product. Your claim is only warranted if the internationally recognized diamond grading laboratory grades your diamond at least two grades lower in color and/or clarity.

This warranty gives you specific legal rights; it does not, in any way, affect the rights given to you by law.

Note that the Gemological Institute of America (GIA) expressly does not offer any guarantee for its own grading reports.



Verify Online

