

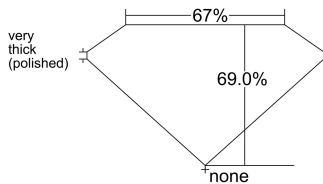
DIAMOND ID : 4146038701

POLISHED PROPERTIES [AS PER GIA]

GIA Report No	*****9620		
Lab	GIA	Cut	
Shape	EM	Polish	EX
Carat	1.30	Symmetry	VG
Color	J	Fluorescence	NON
Clarity	VVS2	Shade	
Key To Symbol	Needle, Pinpoint		
Report Comments			

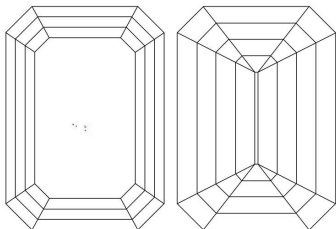
Measurements		Inclusion Details	
Table %	67.00	Center Natts	CN2
Depth %	69.00	Side Natts	SN0
Length	7.14	Center White	CW1
Width	5.10	Side White	SW0
Depth	3.52	Table Open	N
Ratio	1.40	Crown Open	N
Crown Angle	52.14	Pavillion Open	N
Crown Height	15.55	Eye Clean	Y
Pav Angle	60.00	H&A	
Pav Height	48.31	Brilliance	EX
Girdle	VTK	Type2 Cert	--
Culet	NON	Laser Ins.	GIA *****9620

DIMENSIONS



Profile not to actual proportions

PLOTTING



KEY TO SYMBOLS Needle, Pinpoint

DIMENSIONS

Heart



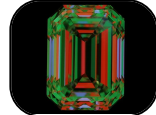
Arrow



Ideal Scope



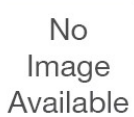
Aset Scope



■ Brightness Light Leakage
 Contrast

■ Brightness ■ Less Bright
 Contrast Light Leakage

Fluorescence



IDEAL scope and ASET Scope are simple tools used to evaluate the light Performance of a diamond. A diamond that reflects a lot of light back to viewer will be full of brilliance, fire and scintillation.



MINING

Country of Origin : NAMIBIA
Mine of Origin : -
Authentication Packet #: _



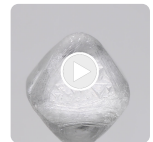
MANUFACTURING

Location: NAMIBIA
WEIGHT : 2.75 ct



ASSORTING

Analysis and scanning by the
Rough Assortment Specialist
WEIGHT : 2.75 ct

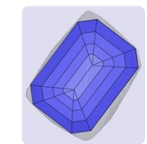


ROUGH



MAPPING

Shape & Size is mapped with
Advanced Technology by
planning technician



SARINE



LASER SAWING

Splitting by Laser Cutting Technician
WEIGHT AFTER SPLITTING: 1.87 ct



LASER CONNING

Conning by Laser Cutting Technician
WEIGHT AFTER CONNING: 1.60 ct



POLISHING

The rough diamond is faceted by a
Skilled Polishing Artisan
1.30 J VVS2 EX VG NON



VIDEO



IMAGE



GRADING

Multiple parameters beyond the 4C's
are accessed to grade the diamond
by an experienced Grading Specialist
1.30 J VVS2 EX VG NON



CERTIFYING

Laboratory certification by GIA provides
an impartial judgement of the quality
and characteristics of the diamond.
1.30 J VVS2 EX VG NON

