

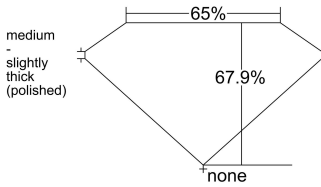
DIAMOND ID : 3116051500

POLISHED PROPERTIES [AS PER GIA]

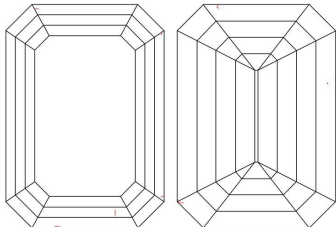
GIA Report No	*****8255		
Lab	GIA	Cut	
Shape	EM	Polish	EX
Carat	1.68	Symmetry	EX
Color	H	Fluorescence	NON
Clarity	VVS2	Shade	
Key To Symbol	Feather, Pinpoint		
Report Comments			

Measurements		Inclusion Details	
Table %	65.00	Center Natts	CN0
Depth %	67.90	Side Natts	SN0
Length	7.97	Center White	CW0
Width	5.69	Side White	SW1
Depth	3.86	Table Open	N
Ratio	1.40	Crown Open	N
Crown Angle	49.98	Pavillion Open	N
Crown Height	15.12	Eye Clean	Y
Pav Angle	55.05	H&A	
Pav Height	49.70	Brilliance	EX
Girdle	MED to STK	Type2 Cert	--
Culet	NON	Laser Ins.	GIA *****8255

DIMENSIONS



PLOTTING



DIMENSIONS

Heart

No Image Available

Ideal Scope

Arrow

No Image Available

Aset Scope

■ Brightness  Light Leakage  
 Contrast

■ Brightness ■ Less Bright  
■ Contrast  Light Leakage

Fluorescence

No Image Available

IDEAL scope and ASET Scope are simple tools used to evaluate the light Performance of a diamond. A diamond that reflects a lot of light back to viewer will be full of brilliance, fire and scintillation.



MINING

Country of Origin : DTC  
 Mine of Origin : —  
 Authentication Packet #: \_



MANUFACTURING

Location: SURAT, INDIA  
 WEIGHT : 3.12 ct



ASSORTING

Analysis and scanning by the  
 Rough Assortment Specialist  
 WEIGHT : 3.12 ct

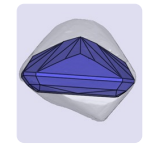


ROUGH



MAPPING

Shape & Size is mapped with  
 Advanced Technology by  
 planning technician



SARINE



LASER SAWING

Splitting by Laser Cutting Technician  
 WEIGHT AFTER SPLITTING: 2.50 ct



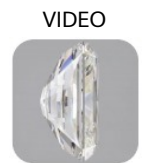
LASER CONNING

Conning by Laser Cutting Technician  
 WEIGHT AFTER CONNING: 2.40 ct



POLISHING

The rough diamond is faceted by a  
 Skilled Polishing Artisan  
 1.68 H VVS2 EX EX NON



IMAGE

VIDEO



GRADING

Multiple parameters beyond the 4C's  
 are accessed to grade the diamond  
 by an experienced Grading Specialist  
 1.68 H VVS2 EX EX NON



CERTIFYING

Laboratory certification by GIA provides  
 an impartial judgement of the quality  
 and characteristics of the diamond.  
 1.68 H VVS2 EX EX NON

