

**GIA NATURAL DIAMOND GRADING REPORT**

September 26, 2024

GIA Report Number ..... 5506513275

Shape and Cutting Style ..... Round Brilliant

Measurements ..... 6.47 - 6.51 x 3.88 mm

**GRADING RESULTS**

Carat Weight ..... 1.00 carat

Color Grade ..... E

Clarity Grade ..... VS1

Cut Grade ..... Excellent

**ADDITIONAL GRADING INFORMATION**

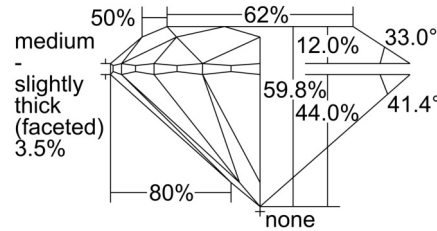
Polish ..... Excellent

Symmetry ..... Excellent

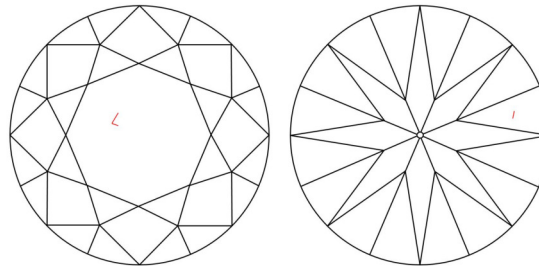
Fluorescence ..... None

Inscription(s): GIA 5506513275

**Comments:** Surface graining is not shown.

**PROPORTIONS**


Profile to actual proportions

**CLARITY CHARACTERISTICS**

**KEY TO SYMBOLS\***
 Feather

**GRADING SCALES**
**GIA  
COLOR  
SCALE**

COLOURLESS	D
	E
	F
	G
NEAR COLOURLESS	H
	I
	J
	K
FANT	L
	M
	N
VERY LIGHT	O
	P
	Q
	R
	S
	T
	U
	V
LIGHT	W
	X
	Y
	Z

**GIA  
CLARITY  
SCALE**

	FLAWLESS
	INTERNALLY FLAWLESS
VERY VERY SLIGHTLY INCLUDED	VVS <sub>1</sub>
	VVS <sub>2</sub>
VERY SLIGHTLY INCLUDED	VS <sub>1</sub>
	VS <sub>2</sub>
SLIGHTLY INCLUDED	SI <sub>1</sub>
	SI <sub>2</sub>
INCLUDED	I <sub>1</sub>
	I <sub>2</sub>
	I <sub>3</sub>

**GIA  
CUT  
SCALE**

	EXCELLENT
	VERY GOOD
	GOOD
	FAIR
	POOR


[reportcheck.gia.edu](http://reportcheck.gia.edu)

 The results documented in this report refer only to the diamond described, and were obtained using the techniques and equipment available to GIA at the time of examination. This report is not a guarantee or valuation. For additional information and important limitations and disclaimers, please see [GIA.edu/terms](http://GIA.edu/terms) or call +1 800 421 7250 or +1 760 603 4500. ©2023 Gemological Institute of America, Inc.

\* Red symbols denote internal characteristics (inclusions). Green or black symbols denote external characteristics (blemishes). Diagram is an approximate representation of the diamond, and symbols shown indicate type, position, and approximate size of clarity characteristics. All clarity characteristics may not be shown. Details of finish are not shown.

 THE SECURITY FEATURES IN THIS DOCUMENT, INCLUDING THE HOLOGRAM, SECURITY SCREEN AND MICROPRINT LINES, IN ADDITION TO THOSE NOT LISTED, EXCEED DOCUMENT SECURITY INDUSTRY GUIDELINES.