

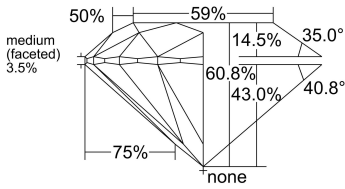
DIAMOND ID : 3116042600

POLISHED PROPERTIES [AS PER GIA]

GIA Report No	*****0702		
Lab	GIA	Cut	EX
Shape	ROUND	Polish	EX
Carat	1.01	Symmetry	EX
Color	D	Fluorescence	NON
Clarity	VVS2	Shade	
Key To Symbol	Pinpoint, Needle		
Report Comments			

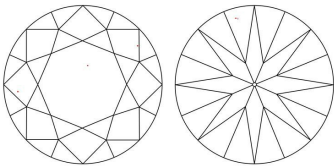
Measurements		Inclusion Details	
Table %	59.00	Center Natts	CN1
Depth %	60.80	Side Natts	SN0
Length	6.49	Center White	CW1
Width	6.45	Side White	SW1
Depth	3.93	Table Open	N
Ratio		Crown Open	N
Crown Angle	35.00	Pavillion Open	N
Crown Height	14.50	Eye Clean	Y
Pav Angle	40.80	H&A	VG
Pav Height	43.00	Brilliancy	EX
Girdle	MED	Type2 Cert	--
Culet	NON	Laser Ins.	GIA *****0702

DIMENSIONS



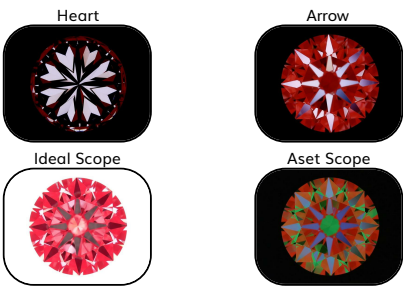
Profile to actual proportions

PLOTTING



KEY TO SYMBOLS Pinpoint, Needle

DIMENSIONS



■ Brightness Light Leakage
■ Contrast ■ Brightness ■ Less Bright
■ Contrast ■ Light Leakage

Fluorescence

No Image Available

IDEAL scope and ASET Scope are simple tools used to evaluate the light Performance of a diamond. A diamond that reflects a lot of light back to viewer will be full of brilliance, fire and scintillation.



MINING

Country of Origin : DTC
 Mine of Origin : —
 Authentication Packet #: _



MANUFACTURING

Location: SURAT, INDIA
 WEIGHT : 3.72 ct



ASSORTING

Analysis and scanning by the
 Rough Assortment Specialist
 WEIGHT : 3.72 ct

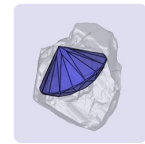


ROUGH



MAPPING

Shape & Size is mapped with
 Advanced Technology by
 planning technician



SARINE



LASER SAWING

Splitting by Laser Cutting Technician
 WEIGHT AFTER SPLITTING: 1.89 ct



LASER CONNING

Conning by Laser Cutting Technician
 WEIGHT AFTER CONNING: 1.33 ct

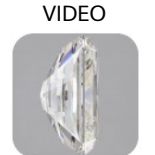


POLISHING

The rough diamond is faceted by a
 Skilled Polishing Artisan
 1.01 D VVS2 EX EX EX NON



IMAGE



VIDEO



GRADING

Multiple parameters beyond the 4C's
 are accessed to grade the diamond
 by an experienced Grading Specialist
 1.01 D VVS2 EX EX EX NON



CERTIFYING

Laboratory certification by GIA provides
 an impartial judgement of the quality
 and characteristics of the diamond.
 1.01 D VVS2 EX EX EX NON

