

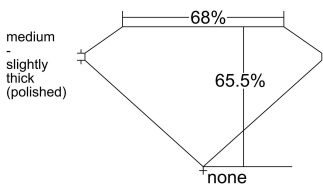
DIAMOND ID : 1306003308

POLISHED PROPERTIES [AS PER GIA]

GIA Report No	*****7135		
Lab	GIA	Cut	
Shape	EM	Polish	EX
Carat	1.03	Symmetry	EX
Color	E	Fluorescence	NON
Clarity	VVS2	Shade	
Key To Symbol	Pinpoint		
Report Comments			

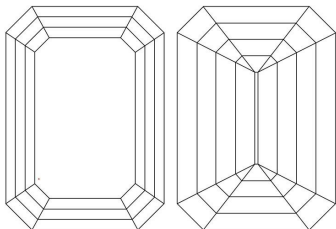
Measurements		Inclusion Details	
Table %	68.00	Center Natts	CN0
Depth %	65.50	Side Natts	SN0
Length	7.21	Center White	CW1
Width	4.73	Side White	SW0
Depth	3.09	Table Open	N
Ratio	1.52	Crown Open	N
Crown Angle	49.85	Pavillion Open	N
Crown Height	11.03	Eye Clean	Y
Pav Angle	59.61	H&A	
Pav Height	51.92	Brilliancy	EX
Girdle	MED to STK	Type2 Cert	--
Culet	NON	Laser Ins.	GIA *****7135

DIMENSIONS



Profile not to actual proportions

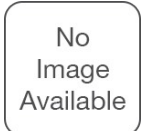
PLOTTING



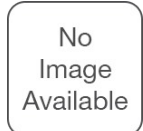
KEY TO SYMBOLS Pinpoint

DIMENSIONS

Heart



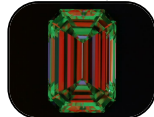
Arrow



Ideal Scope



Aset Scope



■ Brightness Light Leakage

■ Brightness ■ Less Bright
■ Contrast ■ Light Leakage

Fluorescence



IDEAL scope and ASET Scope are simple tools used to evaluate the light Performance of a diamond. A diamond that reflects a lot of light back to viewer will be full of brilliance, fire and scintillation.



MINING

Country of Origin : BOTSWANA
Mine of Origin : —
Authentication Packet #: _



MANUFACTURING

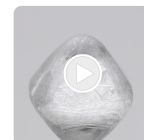
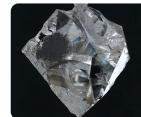
Location: SURAT, INDIA
WEIGHT : 110.46 ct



ASSORTING

Analysis and scanning by the
Rough Assortment Specialist
WEIGHT : 110.46 ct

ROUGH



MAPPING

Shape & Size is mapped with
Advanced Technology by
planning technician

SARINE



LASER SAWING

Splitting by Laser Cutting Technician
WEIGHT AFTER SPLITTING: 1.57 ct



LASER CONNING

Conning by Laser Cutting Technician
WEIGHT AFTER CONNING: 1.39 ct



POLISHING

The rough diamond is faceted by a
Skilled Polishing Artisan
1.03 E VVS2 EX EX NON

IMAGE



VIDEO



GRADING

Multiple parameters beyond the 4C's
are accessed to grade the diamond
by an experienced Grading Specialist
1.03 E VVS2 EX EX NON



CERTIFYING

Laboratory certification by GIA provides
an impartial judgement of the quality
and characteristics of the diamond.
1.03 E VVS2 EX EX NON

