

GIA NATURAL DIAMOND GRADING REPORT

October 17, 2024
 GIA Report Number 7501625818
 Shape and Cutting Style Round Brilliant
 Measurements 7.14 - 7.19 x 4.46 mm

GRADING RESULTS

Carat Weight 1.42 carat
 Color Grade D
 Clarity Grade VS2
 Cut Grade Excellent

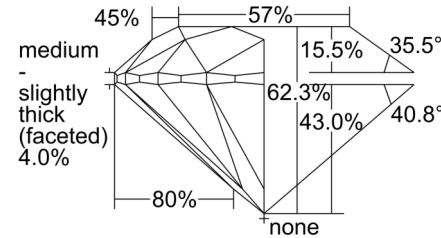
ADDITIONAL GRADING INFORMATION

Polish Excellent
 Symmetry Excellent
 Fluorescence None

Inscription(s): GIA 7501625818

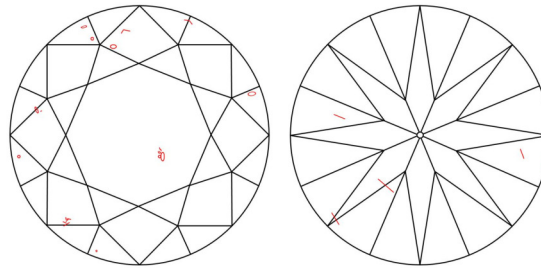
Comments: Pinpoints, internal graining and surface graining are not shown.

PROPORTIONS



Profile to actual proportions

CLARITY CHARACTERISTICS



KEY TO SYMBOLS*

- Crystal
- ~ Feather
- ⊙ Cloud
- ∖ Needle

* Red symbols denote internal characteristics (inclusions). Green or black symbols denote external characteristics (blemishes). Diagram is an approximate representation of the diamond, and symbols shown indicate type, position, and approximate size of clarity characteristics. All clarity characteristics may not be shown. Details of finish are not shown.

GRADING SCALES

| GIA COLOR SCALE | GIA CLARITY SCALE | GIA CUT SCALE | |
|-----------------|-------------------|---------------|---------------------|
| D E F | FLAWLESS | EXCELLENT | |
| | G | | INTERNALLY FLAWLESS |
| | H | | VVS ₁ |
| I J K | VVS ₂ | VERY GOOD | |
| | L | | VS ₁ |
| | M | | VS ₂ |
| N O P | SI ₁ | GOOD | |
| | Q | | SI ₂ |
| | R | | I ₁ |
| S T U | I ₂ | FAIR | |
| | V | | I ₃ |
| | W | | |
| X Y Z | | POOR | |
| | | | |
| | | | |



reportcheck.gia.edu



The results documented in this report refer only to the diamond described, and were obtained using the techniques and equipment available to GIA at the time of examination. This report is not a guarantee or valuation. For additional information and important limitations and disclaimers, please see GIA.edu/terms or call +1 800 421 7250 or +1 760 603 4500. ©2023 Gemological Institute of America, Inc.

THE SECURITY FEATURES IN THIS DOCUMENT, INCLUDING THE HOLOGRAM, SECURITY SCREEN AND MICROPRINT LINES, IN ADDITION TO THOSE NOT LISTED, EXCEED DOCUMENT SECURITY INDUSTRY GUIDELINES.