

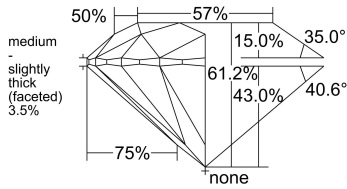
DIAMOND ID : 5565015501

POLISHED PROPERTIES [AS PER GIA]

GIA Report No	*****8434		
Lab	GIA	Cut	EX
Shape	ROUND	Polish	EX
Carat	2.50	Symmetry	EX
Color	D	Fluorescence	NON
Clarity	VVS1	Shade	
Key To Symbol	Needle, Pinpoint, Feather		
Report Comments			

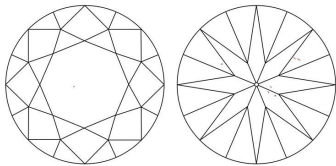
Measurements		Inclusion Details	
Table %	57.00	Center Natts	CN0
Depth %	61.20	Side Natts	SN0
Length	8.73	Center White	CW0
Width	8.69	Side White	SW0
Depth	5.34	Table Open	N
Ratio		Crown Open	N
Crown Angle	35.00	Pavillion Open	N
Crown Height	15.00	Eye Clean	Y
Pav Angle	40.60	H&A	VG
Pav Height	43.00	Brilliancy	EX
Girdle	MED to STK	Type2 Cert	--
Culet	NON	Laser Ins.	GIA *****8434

DIMENSIONS



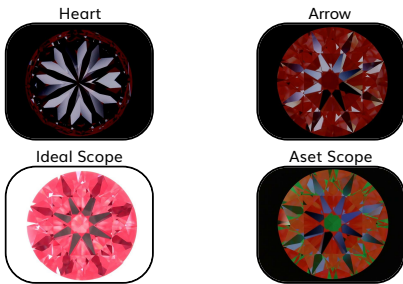
Profile to actual proportions

PLOTTING



KEY TO SYMBOLS Needle, Pinpoint, Feather

DIMENSIONS



■ Brightness  Light Leakage  
■ Contrast ■ Less Bright ■ Light Leakage

Fluorescence

No Image Available

IDEAL scope and ASET Scope are simple tools used to evaluate the light Performance of a diamond. A diamond that reflects a lot of light back to viewer will be full of brilliance, fire and scintillation.



MINING

Country of Origin : SOUTH AFRICA  
 Mine of Origin : —  
 Authentication Packet #: \_



MANUFACTURING

Location: SOUTHAFRICA  
 WEIGHT : 9.23 ct



ASSORTING

Analysis and scanning by the  
 Rough Assortment Specialist  
 WEIGHT : 9.23 ct

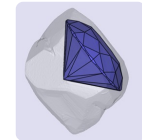
ROUGH



MAPPING

Shape & Size is mapped with  
 Advanced Technology by  
 planning technician

SARINE



LASER SAWING

Splitting by Laser Cutting Technician  
 WEIGHT AFTER SPLITTING: 3.69 ct



LASER CONNING

Conning by Laser Cutting Technician  
 WEIGHT AFTER CONNING: 3.18 ct



POLISHING

The rough diamond is faceted by a  
 Skilled Polishing Artisan  
 2.50 D VVS1 EX EX EX NON

IMAGE



VIDEO



GRADING

Multiple parameters beyond the 4C's  
 are accessed to grade the diamond  
 by an experienced Grading Specialist  
 2.50 D VVS1 EX EX EX NON



CERTIFYING

Laboratory certification by GIA provides  
 an impartial judgement of the quality  
 and characteristics of the diamond.  
 2.50 D VVS1 EX EX EX NON

