

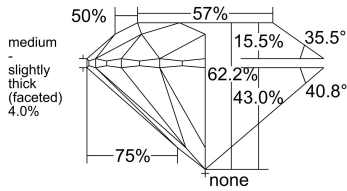
DIAMOND ID : 4146041301

POLISHED PROPERTIES [AS PER GIA]

GIA Report No	*****7413		
Lab	GIA	Cut	EX
Shape	ROUND	Polish	EX
Carat	1.01	Symmetry	EX
Color	F	Fluorescence	NON
Clarity	VVS2	Shade	
Key To Symbol	Feather, Pinpoint		
Report Comments			

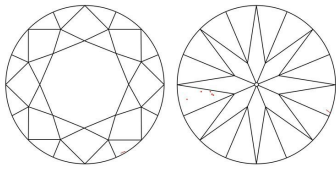
Measurements		Inclusion Details	
Table %	57.00	Center Natts	CN0
Depth %	62.20	Side Natts	SN0
Length	6.42	Center White	CW1
Width	6.39	Side White	SW1
Depth	3.99	Table Open	N
Ratio		Crown Open	N
Crown Angle	35.50	Pavillion Open	N
Crown Height	15.50	Eye Clean	Y
Pav Angle	40.80	H&A	VG
Pav Height	43.00	Brilliancy	EX
Girdle	MED to STK	Type2 Cert	--
Culet	NON	Laser Ins.	GIA *****7413

DIMENSIONS



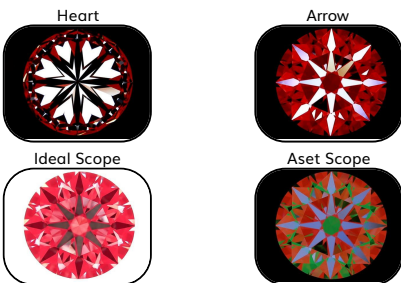
Profile to actual proportions

PLOTTING



KEY TO SYMBOLS Feather, Pinpoint

DIMENSIONS



■ Brightness  Light Leakage  
■ Contrast ■ Brightness ■ Less Bright  
■ Contrast ■ Light Leakage

Fluorescence

No Image Available

IDEAL scope and ASET Scope are simple tools used to evaluate the light Performance of a diamond. A diamond that reflects a lot of light back to viewer will be full of brilliance, fire and scintillation.



MINING

Country of Origin : NAMIBIA  
 Mine of Origin : -  
 Authentication Packet #: \_



MANUFACTURING

Location: NAMIBIA  
 WEIGHT : 2.56 ct



ASSORTING

Analysis and scanning by the  
 Rough Assortment Specialist  
 WEIGHT : 2.56 ct

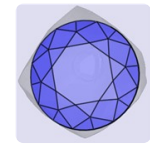


ROUGH



MAPPING

Shape & Size is mapped with  
 Advanced Technology by  
 planning technician



SARINE



LASER SAWING

Splitting by Laser Cutting Technician  
 WEIGHT AFTER SPLITTING: 1.66 ct



LASER CONNING

Conning by Laser Cutting Technician  
 WEIGHT AFTER CONNING: 1.27 ct

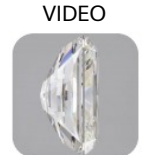


POLISHING

The rough diamond is faceted by a  
 Skilled Polishing Artisan  
 1.01 F VVS2 EX EX EX NON



IMAGE



VIDEO



GRADING

Multiple parameters beyond the 4C's  
 are accessed to grade the diamond  
 by an experienced Grading Specialist  
 1.01 F VVS2 EX EX EX NON



CERTIFYING

Laboratory certification by GIA provides  
 an impartial judgement of the quality  
 and characteristics of the diamond.  
 1.01 F VVS2 EX EX EX NON

