



IGI GEMOLOGICAL REPORT

IGI LABORATORY GROWN DIAMOND GRADING REPORT

07/27/2020

IGI Report Number LG425067657

Shape and Cutting Style SQUARE CUSHION MODIFIED BRILLIANT

Measurements 7.53 X 7.21 X 4.77 MM

GRADING RESULTS

Carat Weight 2.00 CARATS

Color Grade K

Clarity Grade VS 1

ADDITIONAL GRADING INFORMATION

Polish EXCELLENT

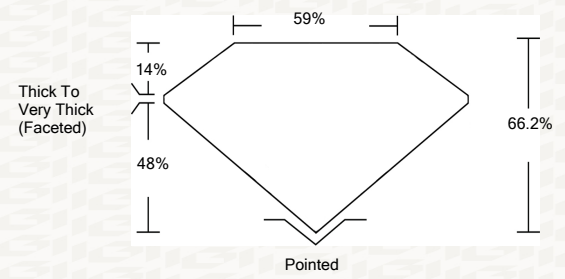
Symmetry VERY GOOD

Fluorescence NONE

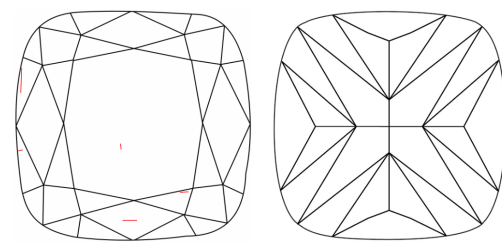
Inscription(s) LABGROWN IGI LG425067657

ADDITIONAL INFORMATION

PROPORTIONS



CLARITY CHARACTERISTICS



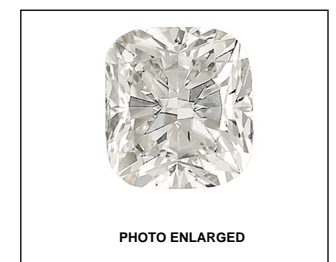
KEY TO SYMBOLS

Red symbols indicate internal characteristics. Green symbols indicate external characteristics.

GRADING SCALES

Table with 5 columns for Color Grading Scale (CL, NC, FT, VLT, LT) and Clarity (10x) Grading Scale (FL, IF, VVS, VS, SI, I).

The laboratory grown diamond described in this Report (Report) has been graded, tested, analyzed, examined and/or inscribed by International Gemological Institute (IGI). A laboratory grown diamond is one that has essentially the same chemical, physical and optical properties as a mined diamond...



IGI LABORATORY GROWN DIAMOND GRADING REPORT

07/27/2020

IGI Report Number LG425067657

Shape and Cutting Style SQUARE CUSHION MODIFIED BRILLIANT

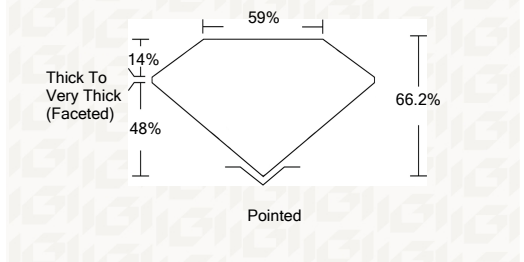
Measurements 7.53 X 7.21 X 4.77 MM

GRADING RESULTS

Carat Weight 2.00 CARATS

Color Grade K

Clarity Grade VS 1



ADDITIONAL GRADING INFORMATION

Polish EXCELLENT

Symmetry VERY GOOD

Fluorescence NONE

Inscription(s) LABGROWN IGI LG425067657



This Report is subject to the terms and conditions

© IGI 2000, edition 2019 all rights reserved.

THE DOCUMENT WAS PRODUCED THE FOLLOWING SECURITY MEASURES: SPECIAL DOCUMENT PAPER, INK SCREENS, WATERMARK, BACKGROUND DESIGNS, HOLOGRAM AND OTHER SECURITY FEATURES NOT LISTED AND DO EXCEED DOCUMENT SECURITY INDUSTRY DUDLINES



IGI

Summary table of report details: IGI Report No LG425067657, SQUARE CUSHION MODIFIED BRILLIANT, 7.53 X 7.21 X 4.77 MM, 2.00 CARATS, Color Grade K, Clarity Grade VS 1, Depth 66.2%, Table 14%, Thick To Very Thick (Faceted) 48%, Polish EXCELLENT, Symmetry VERY GOOD, Fluorescence NONE, LABGROWN IGI LG425067657