



LG444073082

**IGI LABORATORY GROWN
DIAMOND ID REPORT**

09/25/2020

IGI Report Number **LG444073082**

ROUND BRILLIANT

5.06 - 5.12 X 3.05 MM

Carat Weight	0.49 CARAT
Color Grade	D
Clarity Grade	SI 1
Cut Grade	EXCELLENT
Polish	VERY GOOD
Symmetry	EXCELLENT
Fluorescence	NONE
Inscription(s)	LABGROWN IGI LG444073082

Comments: This Laboratory grown diamond was created by high pressure high temperature process (HPHT) Type II

IGI GEMOLOGICAL REPORT

IGI LABORATORY GROWN DIAMOND IDENTIFICATION REPORT

09/25/2020
 IGI Report Number **LG444073082**
 Shape and Cutting Style **ROUND BRILLIANT**
 Measurements **5.06 - 5.12 X 3.05 MM**

GRADING RESULTS

Carat Weight **0.49 CARAT**
 Color Grade **D**
 Clarity Grade **SI 1**
 Cut Grade **EXCELLENT**

ADDITIONAL GRADING INFORMATION

Polish **VERY GOOD**
 Symmetry **EXCELLENT**
 Fluorescence **NONE**
 Inscription(s) **LABGROWN IGI LG444073082**

Comments: This Laboratory grown diamond was created by high pressure high temperature process (HPHT) Type II



ADDITIONAL INFORMATION

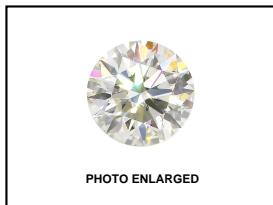
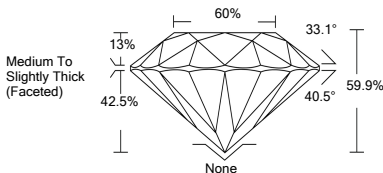


PHOTO ENLARGED



LABGROWN IGI LG444073082

LASERSCRIBE SM



**IGI LABORATORY GROWN
DIAMOND ID REPORT**

09/25/2020

IGI Report Number **LG444073082**

ROUND BRILLIANT

5.06 - 5.12 X 3.05 MM

Carat Weight	0.49 CARAT
Color Grade	D
Clarity Grade	SI 1
Cut Grade	EXCELLENT
Polish	VERY GOOD
Symmetry	EXCELLENT
Fluorescence	NONE
Inscription(s)	LABGROWN IGI LG444073082

Comments: This Laboratory grown diamond was created by high pressure high temperature process (HPHT) Type II

This Laboratory Grown Diamond (LGD) described in this Report has been analyzed, graded and Laserscribed® by International Gemological Institute (IGI). A LGD has essentially the chemical, physical and optical properties as a mined diamond, with the exception of being man-made (a manufactured product). LGD's are typically produced by CVD (chemical vapor deposition) or by HPHT (high pressure high temperature) growth processes and may include post growth modifications to change the color. IGI utilizes the most advanced techniques and equipment currently available including, binocular microscopes, diamond color masters, non-contact-optical measuring device, a wide range analytical techniques including FTIR, UV-VIS-NIR, raman spectroscopy, and fluorescence analysis at various excitation wavelengths. This Report includes advanced security features. This Report is neither a guarantee, valuation nor appraisal and by making the report IGI does not agree to purchase or replace the article.

For Terms & Conditions, please visit www.igi.org INTERNATIONAL GEMOLOGICAL INSTITUTE, INC



THE DOCUMENT WAS PRODUCED WITH THE FOLLOWING SECURITY MEASURES: SPECIAL DOCUMENT PAPER, INK SCREENS, WATERMARK BACKGROUND DESIGNS HOLOGRAM AND OTHER SECURITY FEATURES NOT LISTED AND DO EXCEED DOCUMENT SECURITY INDUSTRY GUIDELINES