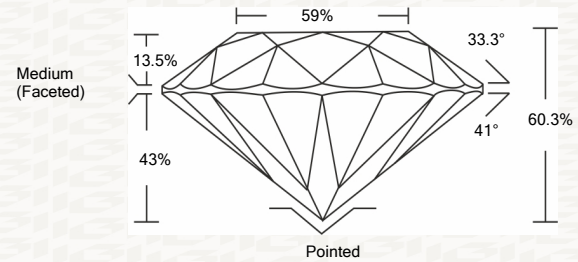




IGI GEMOLOGICAL REPORT

ADDITIONAL INFORMATION

PROPORTIONS



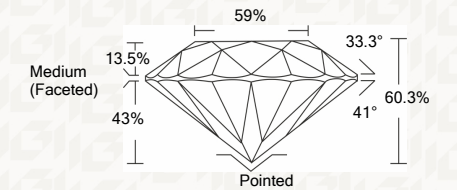
CLARITY CHARACTERISTICS

GRADING SCALES

Table showing grading scales for Color (CL), Clarity (CLARITY 10x), and various categories like COLORLESS D-F, NEAR COLORLESS G-J, FAINT K-M, VERY LIGHT N-R, LIGHT S-Z, FL, IF, VVS, VS, SI, I.

IGI LABORATORY GROWN DIAMOND GRADING REPORT

11/30/2020 IGI Report Number LG451065888 Shape and Cutting Style ROUND BRILLIANT Measurements 6.60 - 6.63 X 3.99 MM GRADING RESULTS Carat Weight 1.07 CARAT Color Grade D Clarity Grade VS 2 Cut Grade IDEAL



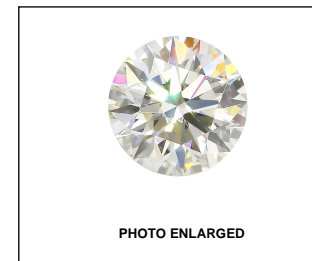
ADDITIONAL GRADING INFORMATION

Polish EXCELLENT Symmetry EXCELLENT Fluorescence NONE Inscription(s) LABGROWN IGI LG451065888

Comments: This Laboratory Grown Diamond was created by high pressure high temperature process (HPHT). Type II

The laboratory grown diamond described in this Report (Report) has been graded, tested, analyzed, examined and/or inscribed by International Gemological Institute (I.G.I.). A laboratory grown diamond is one that has essentially the same chemical, physical and optical properties as a mined diamond, with the exception of being grown by man (a manufactured product).

© INTERNATIONAL GEMOLOGICAL INSTITUTE, INC.



LASERSCRIBE SM



This Report is subject to the terms and conditions

© IGI 2000, edition 2019 all rights reserved.

THE DOCUMENT WAS PRODUCED WITH THE FOLLOWING SECURITY MEASURES: SPECIAL DOCUMENT PAPER, INK SCREENS, WATERMARK BACKGROUND DESIGNS HOLOGRAM AND OTHER SECURITY FEATURES NOT LISTED AND DO EXCEED DOCUMENT SECURITY INDUSTRY GUIDELINES

11/30/2020 IGI Report No. LG451065888 ROUND BRILLIANT 6.60 - 6.63 X 3.99 MM 1.07 CARAT D VS 2 IDEAL 60.3% 59% Medium (Faceted) Polished EXCELLENT EXCELLENT NONE LABGROWN IGI LG451065888 Comments: This Laboratory Grown Diamond was created by high pressure high temperature process (HPHT). Type II

