



# INTERNATIONAL GEMOLOGICAL INSTITUTE

ELECTRONIC COPY

## LABORATORY GROWN DIAMOND REPORT

LG464199761

### IGI LABORATORY GROWN DIAMOND ID REPORT

03/08/2021

IGI Report Number **LG464199761**

**EMERALD CUT**

**6.08 X 4.27 X 3.26 MM**

Carat Weight 0.84 CARAT

Color Grade E

Clarity Grade VVS 1

Polish EXCELLENT

Symmetry VERY GOOD

Fluorescence NONE

Inscription(s) LABGROWN IGI  
LG464199761

Comments: This Laboratory Grown Diamond was created by Chemical Vapor Deposition (CVD) growth process and may include post-growth treatment.  
Type IIa

### IGI LABORATORY GROWN DIAMOND ID REPORT

03/08/2021

IGI Report Number **LG464199761**

**EMERALD CUT**

**6.08 X 4.27 X 3.26 MM**

Carat Weight 0.84 CARAT

Color Grade E

Clarity Grade VVS 1

Polish EXCELLENT

Symmetry VERY GOOD

Fluorescence NONE

Inscription(s) LABGROWN IGI  
LG464199761

Comments: This Laboratory Grown Diamond was created by Chemical Vapor Deposition (CVD) growth process and may include post-growth treatment.  
Type IIa

## LABORATORY GROWN DIAMOND REPORT

### IGI LABORATORY GROWN DIAMOND IDENTIFICATION REPORT

03/08/2021

IGI Report Number **LG464199761**

Shape and Cutting Style **EMERALD CUT**

Measurements **6.08 X 4.27 X 3.26 MM**

### GRADING RESULTS

Carat Weight 0.84 CARAT

Color Grade E

Clarity Grade VVS 1

### ADDITIONAL GRADING INFORMATION

Polish EXCELLENT

Symmetry VERY GOOD

Fluorescence NONE

Inscription(s) LABGROWN IGI LG464199761

Comments: This Laboratory Grown Diamond was created by Chemical Vapor Deposition (CVD) growth process and may include post-growth treatment.  
Type IIa



This Laboratory Grown Diamond (LGD) described in this Report has been analyzed, graded and Laserscribed® by International Gemological Institute (IGI). A LGD has essentially the chemical, physical and optical properties as a mined diamond, with the exception of being man-made (a manufactured product). LGDs are typically produced by CVD (chemical vapor deposition) or by HPHT (high pressure high temperature) growth processes and may include post growth modifications to change the color. IGI utilizes the most advanced techniques and equipment currently available including, binocular microscopes, diamond color masters, non-contact-optical measuring device, a wide range analytical techniques including FTIR, UV-VIS-NIR, raman spectroscopy, and fluorescence analysis at various excitation wavelengths. This Report includes advanced security features. This Report is neither a guarantee, valuation nor appraisal and by making the report IGI does not agree to purchase or replace the article.

INTERNATIONAL GEMOLOGICAL INSTITUTE, INC

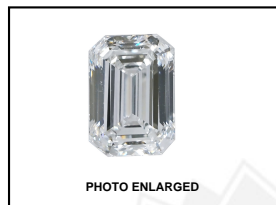
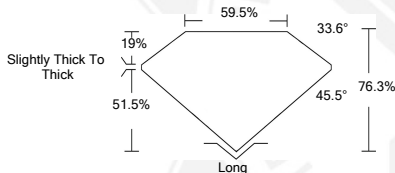


PHOTO ENLARGED



**LASERSCRIBE SM**



THIS DOCUMENT WAS PRODUCED WITH THE FOLLOWING SECURITY MEASURES: SPECIAL DOCUMENT PAPER, INK SCREENS, WATERMARK BACKGROUND DESIGN, HOLOGRAM AND OTHER SECURITY FEATURES NOT LISTED AND DO EXCEED DOCUMENT SECURITY INDUSTRY GUIDELINES.

For Terms & Conditions and to verify this report, please visit [www.igi.org](http://www.igi.org)