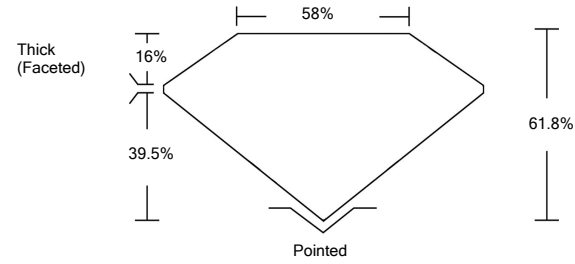




LG467151940

LABORATORY GROWN DIAMOND REPORT

PROPORTIONS



GRADING SCALES

Table with 5 columns for Color Grading Scale (CL, NC, FT, VLT, LT) and Clarity (10x) Grading Scale (FL, IF, VVS, VS, SI, I). Includes sub-labels like COLORLESS D-F, NEAR COLORLESS G-J, FAINT K-M, VERY LIGHT N-R, LIGHT S-Z, etc.

The laboratory grown diamond described in this Report (Report) has been graded, tested, analyzed, examined and/or inscribed by International Gemological Institute (IGI). A laboratory grown diamond is one that has essentially the same chemical, physical and optical properties as a mined diamond...

© INTERNATIONAL GEMOLOGICAL INSTITUTE, INC.

03/09/2021

IGI Report Number LG467151940

Shape and Cutting Style OVAL BRILLIANT

Measurements 11.26 x 8.09 x 5.00 mm

GRADING RESULTS

Carat Weight 3.00 CARATS

Color Grade H

Clarity Grade VS 1

03/09/2021

IGI Report Number LG467151940

Shape and Cutting Style OVAL BRILLIANT

Measurements 11.26 x 8.09 x 5.00 mm

GRADING RESULTS

Carat Weight 3.00 CARATS

Color Grade H

Clarity Grade VS 1

ADDITIONAL GRADING INFORMATION

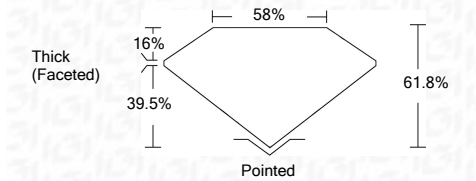
Polish EXCELLENT

Symmetry EXCELLENT

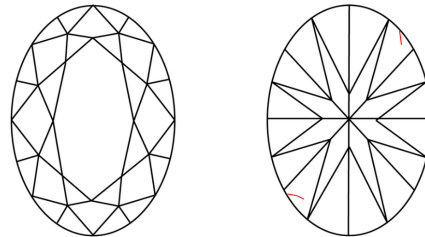
Fluorescence NONE

Inscription(s) LABGROWN IGI LG467151940

Comments: This Laboratory Grown Diamond was created by Chemical Vapor Deposition (CVD) growth process and may include post-growth treatment. Type IIa

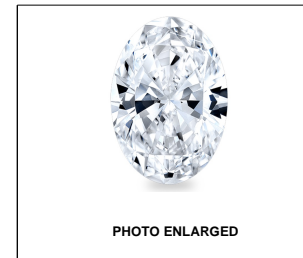


CLARITY CHARACTERISTICS



KEY TO SYMBOLS

Red symbols indicate internal characteristics. Green symbols indicate external characteristics.



LABGROWN IGI LG467151940

LASERSCRIBESM

ADDITIONAL GRADING INFORMATION

Polish EXCELLENT

Symmetry EXCELLENT

Fluorescence NONE

Inscription(s) LABGROWN IGI LG467151940

Comments: This Laboratory Grown Diamond was created by Chemical Vapor Deposition (CVD) growth process and may include post-growth treatment. Type IIa



IGI

03/09/2021 IGI Report No. LG467151940 OVAL BRILLIANT 3.00 CARATS H VS 1 61.8% 58% Thick (Faceted) Pointed EXCELLENT EXCELLENT NONE LABGROWN IGI LG467151940

This Laboratory Grown Diamond was created by Chemical Vapor Deposition (CVD) growth process and may include post-growth treatment. Type IIa