



LABORATORY GROWN DIAMOND REPORT

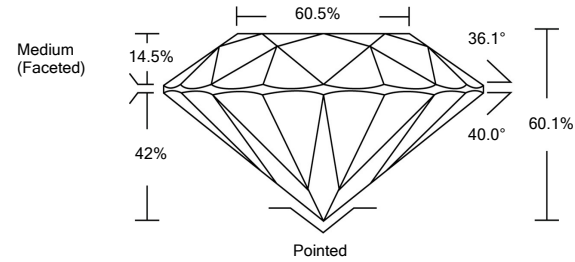
LG468170199

GRADING SCALES

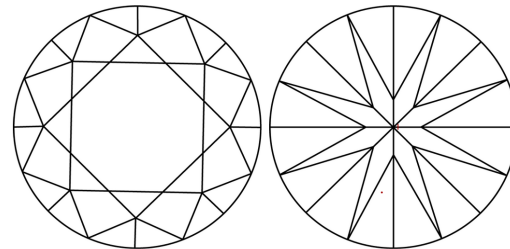
Table with 5 columns for Color Grading Scale (CL, NC, FT, VLT, LT) and Clarity (10x) Grading Scale (FL, IF, VVS, VS, SI, I). Includes sub-grades like D-F, G-J, K-M, N-R, S-Z, etc.

The laboratory grown diamond described in this Report (Report) has been graded, tested, analyzed, examined and/or inscribed by International Gemological Institute (IGI). A laboratory grown diamond is one that has essentially the same chemical, physical and optical properties as a mined diamond...

PROPORTIONS

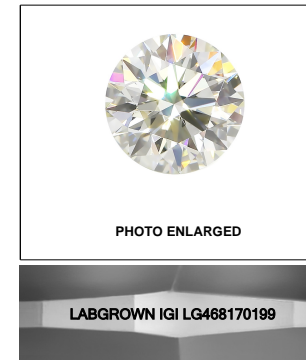


CLARITY CHARACTERISTICS



KEY TO SYMBOLS

Red symbols indicate internal characteristics. Green symbols indicate external characteristics.



03/16/2021

IGI Report Number LG468170199

Shape and Cutting Style ROUND BRILLIANT

Measurements 6.43 - 6.47 x 3.88 mm

GRADING RESULTS

Carat Weight 1.01 CARAT

Color Grade E

Clarity Grade VVS 1

Cut Grade EXCELLENT

ADDITIONAL GRADING INFORMATION

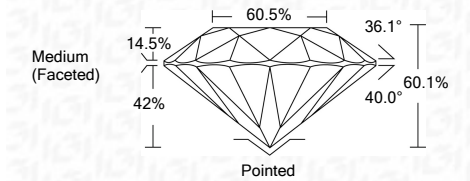
Polish EXCELLENT

Symmetry EXCELLENT

Fluorescence NONE

Inscription(s) LABGROWN IGI LG468170199

Comments: As Grown - No indication of post-growth treatment. This Laboratory Grown Diamond was created by High Pressure High Temperature (HPHT) growth process. Type II



03/16/2021 IGI Report No. LG468170199 ROUND BRILLIANT 6.43 - 6.47 x 3.88 mm 1.01 CARAT E VVS 1 EXCELLENT 60.1% 60.5% Medium (Faceted) Pointed EXCELLENT EXCELLENT NONE LABGROWN IGI LG468170199

