



# INTERNATIONAL GEMOLOGICAL INSTITUTE

## ELECTRONIC COPY LABORATORY GROWN DIAMOND REPORT

### IGI LABORATORY GROWN DIAMOND ID REPORT

04/25/2021  
IGI Report Number **LG470120480**  
**ROUND BRILLIANT**  
**5.16 - 5.18 X 3.09 MM**  
Carat Weight 0.50 CARAT  
Color Grade E  
Clarity Grade SI 1  
Cut Grade EXCELLENT  
Polish EXCELLENT  
Symmetry EXCELLENT  
Fluorescence NONE  
Inscription(s) LABGROWN IGI  
LG470120480

Comments: As Grown - No indication of post-growth treatment.  
This Laboratory Grown Diamond was created by High Pressure High Temperature (HPHT) growth process.  
Type II

### IGI LABORATORY GROWN DIAMOND ID REPORT

04/25/2021  
IGI Report Number **LG470120480**  
**ROUND BRILLIANT**  
**5.16 - 5.18 X 3.09 MM**  
Carat Weight 0.50 CARAT  
Color Grade E  
Clarity Grade SI 1  
Cut Grade EXCELLENT  
Polish EXCELLENT  
Symmetry EXCELLENT  
Fluorescence NONE  
Inscription(s) LABGROWN IGI  
LG470120480

Comments: As Grown - No indication of post-growth treatment.  
This Laboratory Grown Diamond was created by High Pressure High Temperature (HPHT) growth process.  
Type II

## LABORATORY GROWN DIAMOND REPORT

### IGI LABORATORY GROWN DIAMOND IDENTIFICATION REPORT

04/25/2021  
IGI Report Number LG470120480  
Shape and Cutting Style ROUND BRILLIANT  
Measurements 5.16 - 5.18 X 3.09 MM

### GRADING RESULTS

Carat Weight 0.50 CARAT  
Color Grade E  
Clarity Grade SI 1  
Cut Grade EXCELLENT

### ADDITIONAL GRADING INFORMATION

Polish EXCELLENT  
Symmetry EXCELLENT  
Fluorescence NONE  
Inscription(s) LABGROWN IGI LG470120480

Comments: As Grown - No indication of post-growth treatment.  
This Laboratory Grown Diamond was created by High Pressure High Temperature (HPHT) growth process.  
Type II



This Laboratory Grown Diamond (LGD) described in this Report has been analyzed, graded and Laserscribed® by International Gemological Institute (IGI). A LGD has essentially the chemical, physical and optical properties as a mined diamond, with the exception of being man-made (a manufactured product). LGD's are typically produced by CVD (chemical vapor deposition) or by HPHT (high pressure high temperature) growth processes and may include post growth modifications to change the color. IGI utilizes the most advanced techniques and equipment currently available including, binocular microscopes, diamond color masters, non-contact-optical measuring device, a wide range analytical techniques including FTIR, UV-VIS-NIR, raman spectroscopy, and fluorescence analysis at various excitation wavelengths. This Report includes advanced security features. This Report is neither a guarantee, valuation nor appraisal and by making the report IGI does not agree to purchase or replace the article.

INTERNATIONAL GEMOLOGICAL INSTITUTE, INC

LG470120480

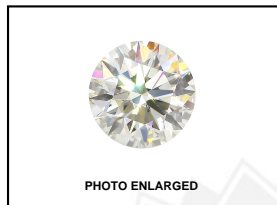
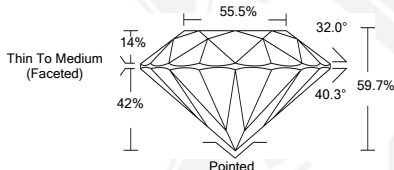


PHOTO ENLARGED



LASERSCRIBE SM



THIS DOCUMENT WAS PRODUCED WITH THE FOLLOWING SECURITY MEASURES: SPECIAL DOCUMENT PAPER, INK SCREENS, WATERMARK, BACKGROUND DESIGN, HOLOGRAM AND OTHER SECURITY FEATURES NOT LISTED AND DO EXCEED DOCUMENT SECURITY INDUSTRY GUIDELINES.

For Terms & Conditions and to verify this report, please visit [www.igi.org](http://www.igi.org)