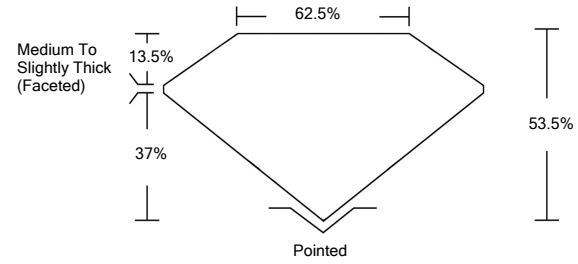




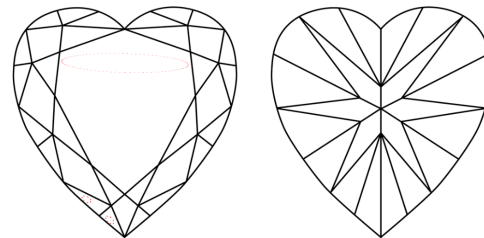
LG470130325

LABORATORY GROWN DIAMOND REPORT

PROPORTIONS



CLARITY CHARACTERISTICS



KEY TO SYMBOLS

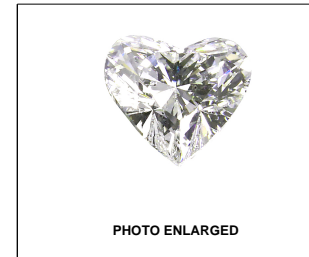
Red symbols indicate internal characteristics. Green symbols indicate external characteristics.

GRADING SCALES

Table with 5 columns for Color Grading Scale (CL to LT) and Clarity (10x) Grading Scale (FL to I). Colorless D-F, Near Colorless G-J, Faint K-M, Very Light N-R, Light S-Z. FL: Flawless Internally Flawless, IF: Internally Flawless, VVS: Very Very Slightly Included, VS: Very Slightly Included, SI: Slightly Included, I: Included.

The laboratory grown diamond described in this Report (Report) has been graded, tested, analyzed, examined and/or inscribed by International Gemological Institute (IGI). A laboratory grown diamond is one that has essentially the same chemical, physical and optical properties as a mined diamond, with the exception of being grown by man (a manufactured product). IGI employs and utilizes those techniques and equipment currently available to IGI, including, without limitation, 10X magnification, corrected triplet loupe, binocular microscope, master color comparison stones, non-contact optical measuring device, Diamond Sure™, Diamond View™, Spectrophotometer and such other instruments and/or processes as deemed appropriate by IGI. This Report includes advanced security features. A duly accredited gemologist or jeweler can advise you with respect to the importance of and interrelationship between cut, color, clarity and carat weight. THIS REPORT IS NEITHER A GUARANTEE, VALUATION, NOR APPRAISAL OF THE GEMSTONE DESCRIBED HEREIN. PLEASE REVIEW THE LIMITATIONS AND RESTRICTIONS SET FORTH ONLINE. FOR ADDITIONAL INFORMATION, IMPORTANT LIMITATIONS AND DISCLAIMERS, PLEASE GO TO WWW.IGI.ORG OR CALL 1-888-BUY-IGIS.

© INTERNATIONAL GEMOLOGICAL INSTITUTE, INC.



LASERSCRIBESM

04/13/2021

IGI Report Number LG470130325

Shape and Cutting Style HEART BRILLIANT

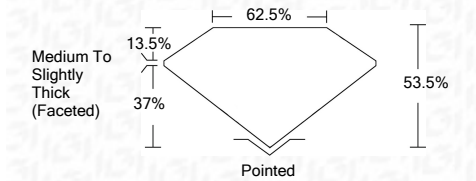
Measurements 7.82 x 9.05 x 4.84 mm

GRADING RESULTS

Carat Weight 2.04 CARATS

Color Grade I

Clarity Grade VS 2



ADDITIONAL GRADING INFORMATION

Polish EXCELLENT

Symmetry EXCELLENT

Fluorescence NONE

Inscription(s) LABGROWN IGI LG470130325

Comments: This Laboratory Grown Diamond was created by Chemical Vapor Deposition (CVD) growth process and may include post-growth treatment. Type IIa



IGI

Summary table: 04/13/2021, IGI Report No. LG470130325, HEART BRILLIANT, 7.82 x 9.05 x 4.84 mm, Carat Weight 2.04 CARATS, Color Grade I, Clarity Grade VS 2, Depth 53.5%, Table 62.5%, Girdle Medium To Slightly Thick (Faceted), Culet Pointed, Polish EXCELLENT, Symmetry EXCELLENT, Fluorescence NONE, Inscription(s) LABGROWN IGI LG470130325. Comments: This Laboratory Grown Diamond was created by Chemical Vapor Deposition (CVD) growth process and may include post-growth treatment. Type IIa

