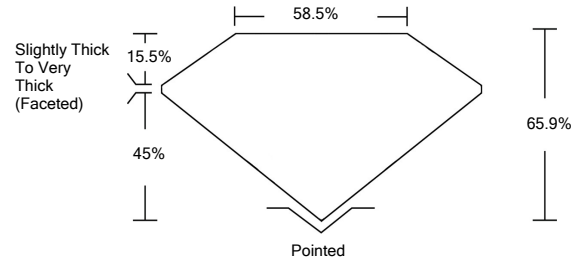




LG470130335

LABORATORY GROWN DIAMOND REPORT

PROPORTIONS

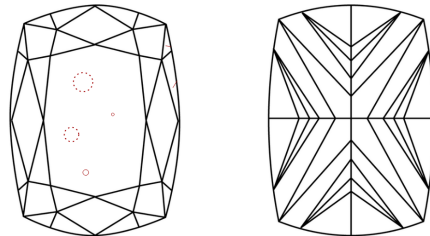


GRADING SCALES

Table with 5 columns for Color Grading Scale (CL, NC, FT, VLT, LT) and Clarity (10x) Grading Scale (FL, IF, VVS, VS, SI, I).

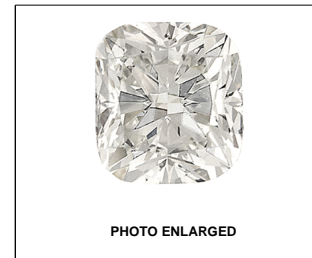
The laboratory grown diamond described in this Report (Report) has been graded, tested, analyzed, examined and/or inscribed by International Gemological Institute (IGI). A laboratory grown diamond is one that has essentially the same chemical, physical and optical properties as a mined diamond...

CLARITY CHARACTERISTICS



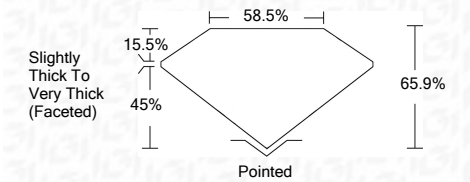
KEY TO SYMBOLS

Red symbols indicate internal characteristics. Green symbols indicate external characteristics.



LASERSCRIBESM

04/15/2021 IGI Report Number LG470130335 Shape and Cutting Style CUSHION MODIFIED BRILLIANT Measurements 9.43 x 7.53 x 4.96 mm GRADING RESULTS Carat Weight 3.02 CARATS Color Grade H Clarity Grade SI 1



ADDITIONAL GRADING INFORMATION

Polish EXCELLENT Symmetry VERY GOOD Fluorescence NONE Inscription(s) LABGROWN IGI LG470130335

Comments: This Laboratory Grown Diamond was created by Chemical Vapor Deposition (CVD) growth process and may include post-growth treatment. Type IIa



IGI

04/15/2021 IGI Report No. LG470130335 CUSHION MODIFIED BRILLIANT 9.43 x 7.53 x 4.96 mm 3.02 CARATS H SI 1 65.9% 58.5% Slightly Thick To Very Thick (Faceted) EXCELLENT VERY GOOD NONE LABGROWN IGI LG470130335

This Laboratory Grown Diamond was created by Chemical Vapor Deposition (CVD) growth process and may include post-growth treatment. Type IIa

