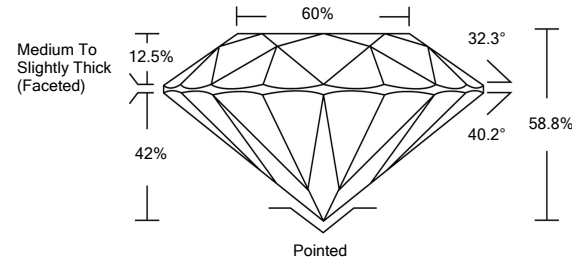




LG478122509

LABORATORY GROWN DIAMOND REPORT

PROPORTIONS



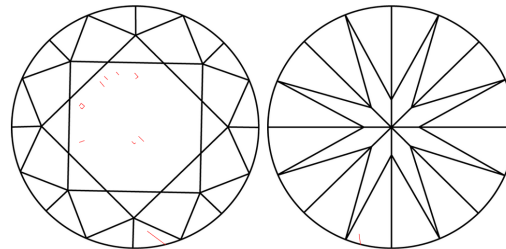
GRADING SCALES

Table with 5 columns for Color Grading Scale (CL to LT) and Clarity (10x) Grading Scale (FL to I).

The laboratory grown diamond described in this Report (Report) has been graded, tested, analyzed, examined and/or inscribed by International Gemological Institute (IGI). A laboratory grown diamond is one that has essentially the same chemical, physical and optical properties as a mined diamond...

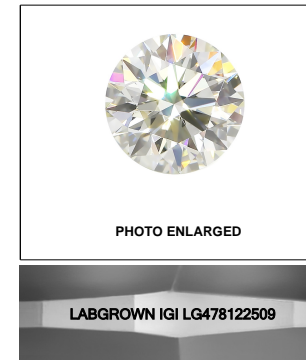
© INTERNATIONAL GEMOLOGICAL INSTITUTE, INC.

CLARITY CHARACTERISTICS



KEY TO SYMBOLS

Red symbols indicate internal characteristics. Green symbols indicate external characteristics.



LASERSCRIBESM

06/03/2021

IGI Report Number LG478122509

Shape and Cutting Style ROUND BRILLIANT

Measurements 9.15 - 9.18 x 5.39 mm

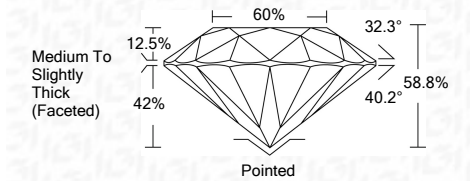
GRADING RESULTS

Carat Weight 2.80 CARATS

Color Grade K

Clarity Grade SI 1

Cut Grade EXCELLENT



ADDITIONAL GRADING INFORMATION

Polish EXCELLENT

Symmetry EXCELLENT

Fluorescence NONE

Inscription(s) LABGROWN IGI LG478122509

Comments: This Laboratory Grown Diamond was created by Chemical Vapor Deposition (CVD) growth process and may include post-growth treatment. Type IIa



IGI

Summary table of report details: IGI Report No. LG478122509, ROUND BRILLIANT, 9.15 - 9.18 x 5.39 mm, 2.80 CARATS, K, SI 1, EXCELLENT, 58.8%, 60%, Medium To Slightly Thick (Faceted), Pointed, EXCELLENT, EXCELLENT, NONE, LABGROWN IGI LG478122509.



06/03/2021

IGI Report No. LG478122509

ROUND BRILLIANT

9.15 - 9.18 x 5.39 mm

Carat Weight 2.80 CARATS

Color Grade K

Clarity Grade SI 1

Cut Grade EXCELLENT

Depth 58.8%

Table 60%

Girdle Medium To Slightly Thick (Faceted)

Culet Pointed

Polish EXCELLENT

Symmetry EXCELLENT

Fluorescence NONE

Inscription(s) LABGROWN IGI LG478122509

Comments: This Laboratory Grown Diamond was created by Chemical Vapor Deposition (CVD) growth process and may include post-growth treatment. Type IIa