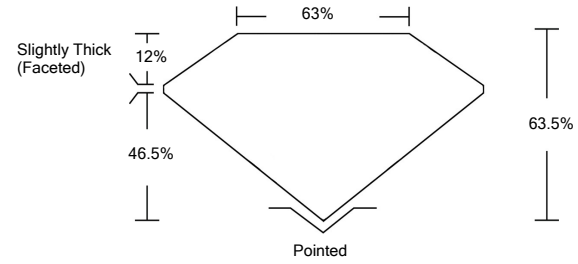




LG483195545

LABORATORY GROWN DIAMOND REPORT

PROPORTIONS

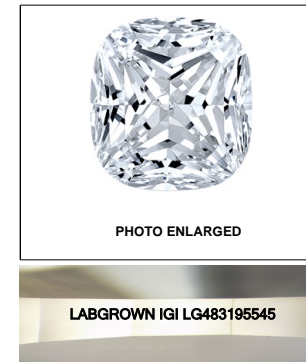
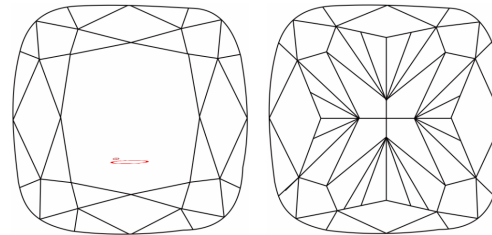


GRADING SCALES

Table with 5 columns for Color Grading Scale (CL, NC, FT, VLT, LT) and Clarity (10x) Grading Scale (FL, IF, VVS, VS, SI, I).

The laboratory grown diamond described in this Report (Report) has been graded, tested, analyzed, examined and/or inscribed by International Gemological Institute (IGI). A laboratory grown diamond is one that has essentially the same chemical, physical and optical properties as a mined diamond...

CLARITY CHARACTERISTICS



LASERSCRIBESM

KEY TO SYMBOLS

Red symbols indicate internal characteristics. Green symbols indicate external characteristics.

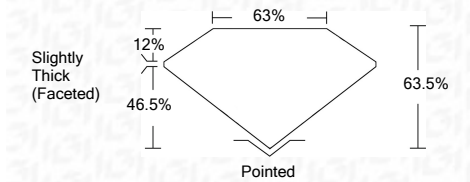
06/28/2021 IGI Report Number LG483195545 Shape and Cutting Style SQUARE CUSHION BRILLIANT Measurements 8.22 x 8.05 x 5.11 mm GRADING RESULTS Carat Weight 3.00 CARATS Color Grade E Clarity Grade SI 2

ADDITIONAL GRADING INFORMATION

Polish EXCELLENT Symmetry EXCELLENT Fluorescence NONE Inscription(s) LABGROWN IGI LG483195545

Comments: As Grown - No indication of post-growth treatment. This Laboratory Grown Diamond was created by High Pressure High Temperature (HPHT) growth process. Type II

06/28/2021 IGI Report Number LG483195545 Shape and Cutting Style SQUARE CUSHION BRILLIANT Measurements 8.22 x 8.05 x 5.11 mm GRADING RESULTS Carat Weight 3.00 CARATS Color Grade E Clarity Grade SI 2



ADDITIONAL GRADING INFORMATION

Polish EXCELLENT Symmetry EXCELLENT Fluorescence NONE Inscription(s) LABGROWN IGI LG483195545

Comments: As Grown - No indication of post-growth treatment. This Laboratory Grown Diamond was created by High Pressure High Temperature (HPHT) growth process. Type II



IGI

06/28/2021 IGI Report No. LG483195545 SQUARE CUSHION BRILLIANT 8.22 x 8.05 x 5.11 mm 3.00 CARATS E SI 2 63.5% 63% Slightly Thick (Faceted) Pointed EXCELLENT EXCELLENT NONE LABGROWN IGI LG483195545

As Grown - No indication of post-growth treatment. This Laboratory Grown Diamond was created by High Pressure High Temperature (HPHT) growth process. Type II

