



LG485136698

LABORATORY GROWN DIAMOND REPORT

07/22/2021
IGI Report Number LG485136698
Shape and Cutting Style ROUND BRILLIANT
Measurements 9.07 - 9.10 x 5.47 mm

GRADING RESULTS

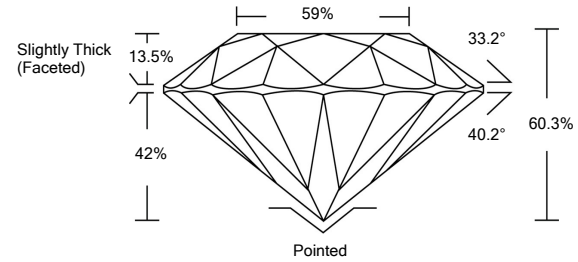
Carat Weight 2.82 CARATS
Color Grade K
Clarity Grade SI 2
Cut Grade EXCELLENT

ADDITIONAL GRADING INFORMATION

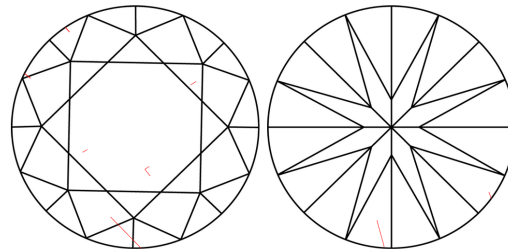
Polish EXCELLENT
Symmetry EXCELLENT
Fluorescence NONE
Inscription(s) LABGROWN IGI LG485136698

Comments: This Laboratory Grown Diamond was created by Chemical Vapor Deposition (CVD) growth process and may include post-growth treatment. Type IIa

PROPORTIONS



CLARITY CHARACTERISTICS



KEY TO SYMBOLS

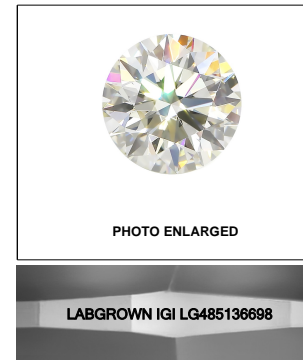
Red symbols indicate internal characteristics.
Green symbols indicate external characteristics.

GRADING SCALES

Table with 2 rows: COLOR GRADING SCALE (CL, NC, FT, VLT, LT) and CLARITY (10x) GRADING SCALE (FL, IF, VVS, VS, SI, I).

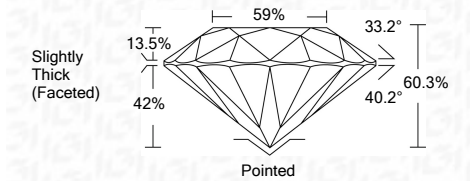
The laboratory grown diamond described in this Report (Report) has been graded, tested, analyzed, examined and/or inscribed by International Gemological Institute (IGI). A laboratory grown diamond is one that has essentially the same chemical, physical and optical properties as a mined diamond...

© INTERNATIONAL GEMOLOGICAL INSTITUTE, INC.



LASERSCRIBE SM

07/22/2021
IGI Report Number LG485136698
Shape and Cutting Style ROUND BRILLIANT
Measurements 9.07 - 9.10 x 5.47 mm
GRADING RESULTS
Carat Weight 2.82 CARATS
Color Grade K
Clarity Grade SI 2
Cut Grade EXCELLENT



ADDITIONAL GRADING INFORMATION

Polish EXCELLENT
Symmetry EXCELLENT
Fluorescence NONE
Inscription(s) LABGROWN IGI LG485136698

Comments: This Laboratory Grown Diamond was created by Chemical Vapor Deposition (CVD) growth process and may include post-growth treatment. Type IIa



IGI

07/22/2021
IGI Report No. LG485136698
ROUND BRILLIANT
Carat Weight 2.82 CARATS
Color Grade K
Clarity Grade SI 2
Cut Grade EXCELLENT
Depth 60.3%
Table 59%
Girdle Slightly Thick (Faceted)
Culet Pointed
Polish EXCELLENT
Symmetry EXCELLENT
Fluorescence NONE
Inscription(s) LABGROWN IGI LG485136698
Comments: This Laboratory Grown Diamond was created by Chemical Vapor Deposition (CVD) growth process and may include post-growth treatment. Type IIa