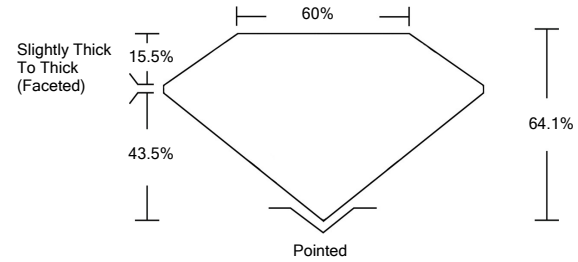




LG485136723

LABORATORY GROWN DIAMOND REPORT

PROPORTIONS



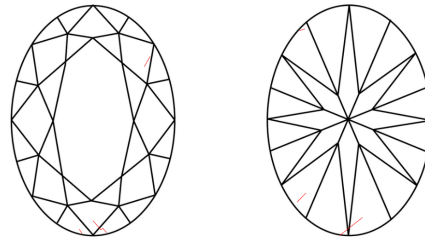
GRADING SCALES

Table with 5 columns for Color Grading Scale (CL to LT) and Clarity (10x) Grading Scale (FL to I).

The laboratory grown diamond described in this Report (Report) has been graded, tested, analyzed, examined and/or inscribed by International Gemological Institute (IGI). A laboratory grown diamond is one that has essentially the same chemical, physical and optical properties as a mined diamond...

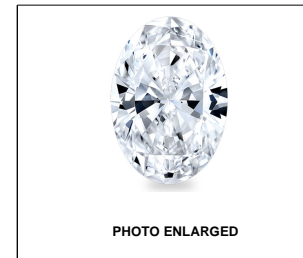
© INTERNATIONAL GEMOLOGICAL INSTITUTE, INC.

CLARITY CHARACTERISTICS



KEY TO SYMBOLS

Red symbols indicate internal characteristics. Green symbols indicate external characteristics.



LABGROWN IGI LG485136723

LASERSCRIBE SM

07/22/2021

IGI Report Number LG485136723

Shape and Cutting Style OVAL BRILLIANT

Measurements 10.55 x 7.92 x 5.08 mm

GRADING RESULTS

Carat Weight 2.80 CARATS

Color Grade J

Clarity Grade SI 1

ADDITIONAL GRADING INFORMATION

Polish EXCELLENT

Symmetry EXCELLENT

Fluorescence NONE

Inscription(s) LABGROWN IGI LG485136723

Comments: This Laboratory Grown Diamond was created by Chemical Vapor Deposition (CVD) growth process and may include post-growth treatment. Type IIa



IGI

Summary table of diamond details: IGI Report No. LG485136723, OVAL BRILLIANT, 10.55 x 7.92 x 5.08 mm, 2.80 CARATS, SI 1, 64.1% depth, 60% table, Slightly Thick To Thick (Faceted) grade, EXCELLENT polish and symmetry, NONE fluorescence, LABGROWN IGI LG485136723 inscription.

This Laboratory Grown Diamond was created by Chemical Vapor Deposition (CVD) growth process and may include post-growth treatment. Type IIa

