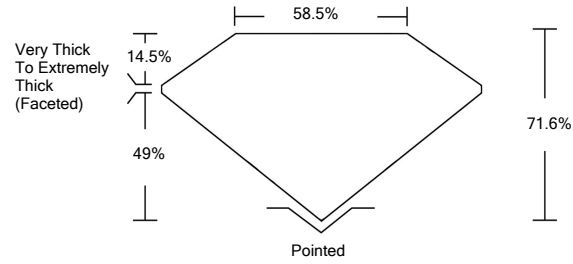




LG487107204

LABORATORY GROWN DIAMOND REPORT

PROPORTIONS



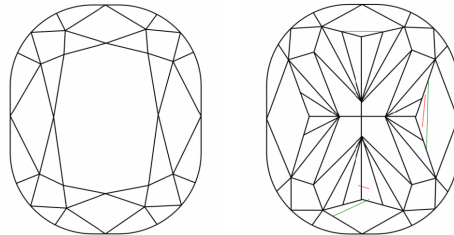
GRADING SCALES

Table with 5 columns for Color Grading Scale (CL, NC, FT, VLT, LT) and Clarity (10x) Grading Scale (FL, IF, VVS, VS, SI, I).

The laboratory grown diamond described in this Report (Report) has been graded, tested, analyzed, examined and/or inscribed by International Gemological Institute (IGI). A laboratory grown diamond is one that has essentially the same chemical, physical and optical properties as a mined diamond...

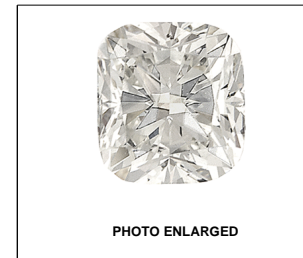
© INTERNATIONAL GEMOLOGICAL INSTITUTE, INC.

CLARITY CHARACTERISTICS



KEY TO SYMBOLS

Red symbols indicate internal characteristics. Green symbols indicate external characteristics.



LASERSCRIBE<sup>SM</sup>

07/27/2021

IGI Report Number LG487107204

Shape and Cutting Style CUSHION MODIFIED BRILLIANT

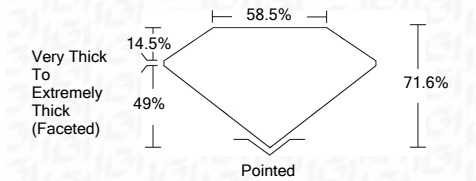
Measurements 7.07 x 5.81 x 4.16 mm

GRADING RESULTS

Carat Weight 1.50 CARAT

Color Grade E

Clarity Grade VS 2



ADDITIONAL GRADING INFORMATION

Polish EXCELLENT

Symmetry GOOD

Fluorescence NONE

Inscription(s) LABGROWN IGI LG487107204

Comments: As Grown - No indication of post-growth treatment. This Laboratory Grown Diamond was created by High Pressure High Temperature (HPHT) growth process. Type II



IGI

IGI Report No. LG487107204
CUSHION MODIFIED BRILLIANT
Carat Weight 1.50 CARAT
Color Grade E
Clarity Grade VS 2
Depth 71.6%
Table 14.5%
Grade Very Thick To Extremely Thick (Faceted)
Culet Pointed
Polish EXCELLENT
Symmetry GOOD
Fluorescence NONE
Inscription(s) LABGROWN IGI LG487107204
Comments: As Grown - No indication of post-growth treatment. This Laboratory Grown Diamond was created by High Pressure High Temperature (HPHT) growth process. Type II

