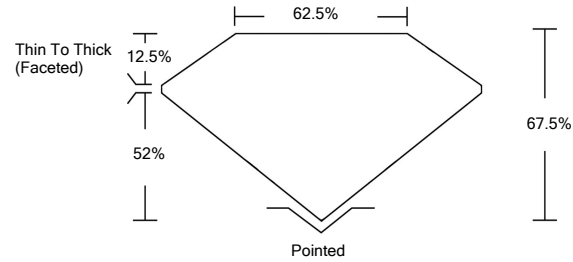




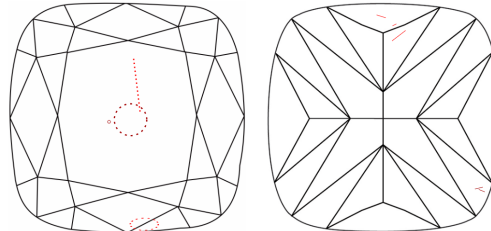
LG488129782

LABORATORY GROWN DIAMOND REPORT

PROPORTIONS



CLARITY CHARACTERISTICS



KEY TO SYMBOLS

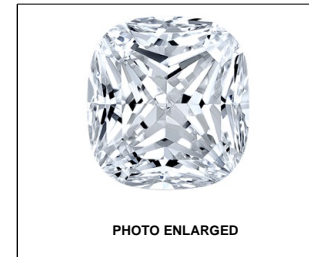
Red symbols indicate internal characteristics. Green symbols indicate external characteristics.

GRADING SCALES

Table with 5 columns for Color Grading Scale (CL to LT) and Clarity (10x) Grading Scale (FL to I).

The laboratory grown diamond described in this Report (Report) has been graded, tested, analyzed, examined and/or inscribed by International Gemological Institute (IGI). A laboratory grown diamond is one that has essentially the same chemical, physical and optical properties as a mined diamond...

© INTERNATIONAL GEMOLOGICAL INSTITUTE, INC.



LABGROWN IGI LG488129782

LASERSCRIBESM

08/06/2021

IGI Report Number LG488129782

Shape and Cutting Style SQUARE CUSHION BRILLIANT

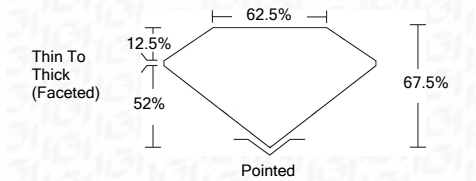
Measurements 6.72 x 6.52 x 4.40 mm

GRADING RESULTS

Carat Weight 1.46 CARAT

Color Grade H

Clarity Grade SI 2



ADDITIONAL GRADING INFORMATION

Polish EXCELLENT

Symmetry VERY GOOD

Fluorescence NONE

Inscription(s) LABGROWN IGI LG488129782

Comments: This Laboratory Grown Diamond was created by Chemical Vapor Deposition (CVD) growth process and may include post-growth treatment. Type IIa



IGI

Summary table of report details: 08/06/2021, IGI Report No. LG488129782, SQUARE CUSHION BRILLIANT, 6.72 x 6.52 x 4.40 mm, 1.46 CARAT, H, SI 2, 67.5%, 62.5%, Pointed, EXCELLENT, VERY GOOD, NONE, LABGROWN IGI LG488129782.

This Laboratory Grown Diamond was created by Chemical Vapor Deposition (CVD) growth process and may include post-growth treatment. Type IIa

