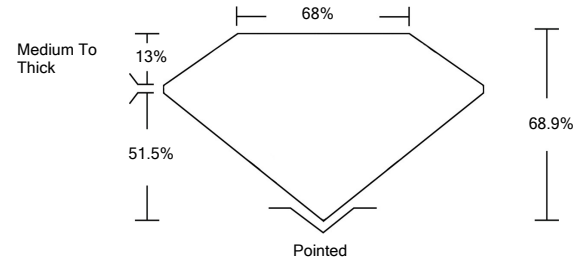




LABORATORY GROWN DIAMOND REPORT

LG490191480

PROPORTIONS



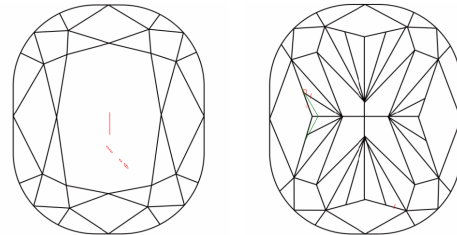
GRADING SCALES

Table with 5 columns for Color Grading Scale (CL, NC, FT, VLT, LT) and Clarity (10x) Grading Scale (FL, IF, VVS, VS, SI, I).

The laboratory grown diamond described in this Report (Report) has been graded, tested, analyzed, examined and/or inscribed by International Gemological Institute (IGI). A laboratory grown diamond is one that has essentially the same chemical, physical and optical properties as a mined diamond...

© INTERNATIONAL GEMOLOGICAL INSTITUTE, INC.

CLARITY CHARACTERISTICS



KEY TO SYMBOLS

Red symbols indicate internal characteristics. Green symbols indicate external characteristics.

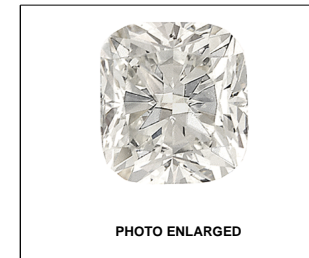


PHOTO ENLARGED



LASERSCRIBESM

08/26/2021

IGI Report Number LG490191480

Shape and Cutting Style CUSHION MODIFIED BRILLIANT

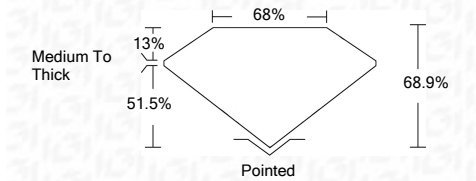
Measurements 7.15 x 5.91 x 4.07 mm

GRADING RESULTS

Carat Weight 1.50 CARAT

Color Grade D

Clarity Grade SI 1



ADDITIONAL GRADING INFORMATION

Polish EXCELLENT

Symmetry GOOD

Fluorescence NONE

Inscription(s) LABGROWN IGI LG490191480

Comments: As Grown - No indication of post-growth treatment. This Laboratory Grown Diamond was created by High Pressure High Temperature (HPHT) growth process. Type II



IGI

08/26/2021 IGI Report No. LG490191480 CUSHION MODIFIED BRILLIANT 7.15 x 5.91 x 4.07 mm 1.50 CARAT D SI 1 68.9% 68% Medium To Thick Pointed EXCELLENT GOOD NONE LABGROWN IGI LG490191480

As Grown - No indication of post-growth treatment. This Laboratory Grown Diamond was created by High Pressure High Temperature (HPHT) growth process. Type II

