



**INTERNATIONAL  
GEMOLOGICAL  
INSTITUTE**

**LABORATORY GROWN DIAMOND REPORT**

October 29, 2021

IGI Report Number **LG12794812**

Shape and Cutting Style **EMERALD CUT**

Measurements **8.15 x 5.54 x 3.82 MM.**

**GRADING RESULTS**

Carat Weight **1.67 CARATS**

Color Grade **H**

Clarity Grade **VS 1**

**ADDITIONAL GRADING INFORMATION**

Polish **EXCELLENT**

Symmetry **VERY GOOD**

Fluorescence **NONE**

Inscription(s) **LAB GROWN IGI LG12794812**

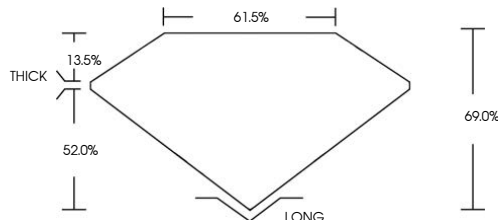
Comments:  
This Laboratory Grown Diamond was created by Chemical Vapor Deposition (CVD) growth process and may include post-growth treatment.  
Type IIa

LABORATORY GROWN DIAMOND REPORT

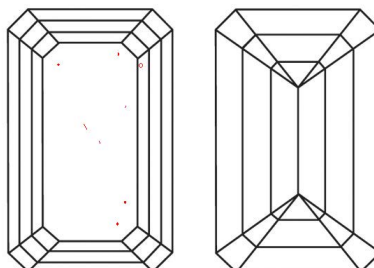
**LG12794812**

Report verification at [igi.org](http://igi.org)

**PROPORTIONS**



**CLARITY CHARACTERISTICS**



**KEY TO SYMBOLS**

Red symbols indicate internal characteristics.  
Green symbols indicate external characteristics.

The laboratory grown diamond described in this Report (Report) has been graded, tested, analyzed, examined and/or inscribed by International Gemological Institute (IGI). A laboratory grown diamond is one that has essentially the same chemical, physical and optical properties as a mined diamond, with the exception of being grown by man (a manufactured product). This is a manufactured (man-made) diamond produced by CVD (chemical vapor deposition) or by HPHT (high pressure high temperature) growth processes and may include post-growth treatments to alter the color. IGI employs and utilizes those techniques and equipment currently available to IGI, including, without limitation, 10X magnification, corrected triplet loupe, binocular microscope, master color comparison stones, non-contact-optical measuring device, Spectrophotometer and such other instruments and/or processes as deemed appropriate by IGI. In the case where diamond melee is set in a mounting, a random testing procedure, regarding the diamonds being of natural or laboratory created origin will be performed. This Report includes advanced security features. A duly accredited gemologist or jeweler can advise you with respect to the importance of and interrelationship between cut, color, clarity and carat weight.

**THIS REPORT IS NEITHER A GUARANTEE, VALUATION, NOR APPRAISAL OF THE GEMSTONE DESCRIBED HEREIN. PLEASE REVIEW THE LIMITATIONS AND RESTRICTIONS SET FORTH ONLINE. FOR ADDITIONAL INFORMATION, IMPORTANT LIMITATIONS AND DISCLAIMERS, PLEASE GO TO [WWW.IGI.ORG/TERMS.HTML](http://WWW.IGI.ORG/TERMS.HTML) OR CALL 1-888-BUY-IGIS.**

© INTERNATIONAL GEMOLOGICAL INSTITUTE, INC.

**LABORATORY GROWN  
DIAMOND REPORT**

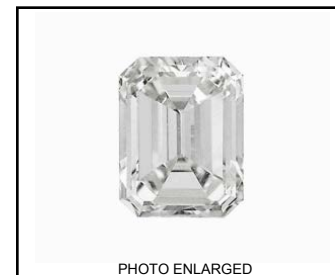
**GRADING SCALES**

**CLARITY**

| IF                  | VVS <sup>1-2</sup>          | VS <sup>1-2</sup>      | SI <sup>1-2</sup> | I <sup>1-3</sup> |
|---------------------|-----------------------------|------------------------|-------------------|------------------|
| Internally Flawless | Very Very Slightly Included | Very Slightly Included | Slightly Included | Included         |

**COLOR**

| D | E | F | G | H | I | J | Faint | Very Light | Light |
|---|---|---|---|---|---|---|-------|------------|-------|
|   |   |   |   |   |   |   |       |            |       |



LASERSCRIBE <sup>SM</sup>



**FACSIMILE**

THIS DOCUMENT WAS PRODUCED WITH THE FOLLOWING SECURITY MEASURES: SPECIAL DOCUMENT PAPER, INK SCREENS, WATERMARK, BACKGROUND DESIGNS, HOLOGRAM AND OTHER SECURITY FEATURES NOT LISTED AND DO EXCEED DOCUMENT SECURITY INDUSTRY GUIDELINES