



LG389980150

PROPORTIONS

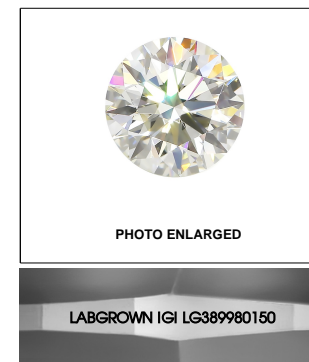
Diagram illustrating the proportions of a diamond, labeled LG389980150. The proportions are defined as follows:

- Table: 58.5%
- Crown Angle: 35°
- Crown Height: 14.5%
- Waist Thickness: Medium To Slightly Thick (Faceted)
- Pavilion Angle: 41°
- Pavilion Depth: 43.5%
- Total Depth: 61.8%

Red symbols indicate internal characteristics.
Green symbols indicate external characteristics.

LABORATORY GROWN
DIAMOND REPORT

COLOR GRADING SCALE	CL		NC		FT		VLT		LT	
	COLORLESS D-F		NEAR COLORLESS G-J		FAINT K-M		VERY LIGHT N-R		LIGHT S-Z	
CLARITY (10x) GRADING SCALE	FL IF		VVS		VS		SI		I	
	FLAWLESS INTERNALLY FLAWLESS		VERY VERY SLIGHTLY INCLUDED		VERY SLIGHTLY INCLUDED		SLIGHTLY INCLUDED		INCLUDED	

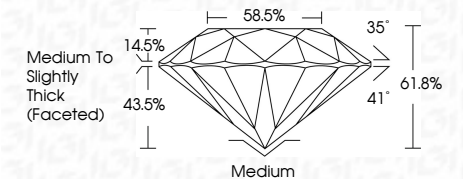
**LASERSCRIBESM**

© IGI 2020, International Gemological Institute

FD - 10 20

www.igi.org

06/23/2021	
IGI Report Number	LG389980150
Shape and Cutting Style	ROUND BRILLIANT
Measurements	6.40 - 6.47 x 3.97 mm
GRADING RESULTS	
Carat Weight	1.01 CARAT
Color Grade	J
Clarity Grade	VVS 2
Cut Grade	IDEAL



Polish	VERY GOOD
Symmetry	VERY GOOD
Fluorescence	NONE
Inscription(s)	LABGROWN IGI LG389980150

Comments: This Laboratory Grown Diamond was created by Chemical Vapor Deposition (CVD) growth process and may include post-growth treatment Type IIa



IGI

THIS DOCUMENT WAS PRODUCED WITH THE FOLLOWING SECURITY MEASURES: SPECIAL DOCUMENT PAPER, INK SCREENS, WATERMARK BACKGROUND DESIGNS, HOLOGRAM AND OTHER SECURITY FEATURES NOT LISTED AND DO EXCEED DOCUMENT SECURITY INDUSTRY GUIDELINES.

06/23/2021	IGI Report No. USG99980160	
ROUND BRILLIANT		
Carat Weight	1.01 CABAT	
Color Grade	J	
Clarity Grade	VS 2	
Cut Grade	IDEAL	
Depth	61.6%	
Table	58.5%	
Grade	Medium to slightly thick (treated)	
Color	Medium	
Polish	VERY GOOD	
Symmetry	VERY GOOD	
Fluorescence	NONE	
Inscription(s)	LABGROWN (IGI USG99980160)	
Comments:	This Laboratory Grown Diamond was created by Chemical Vapor Deposition (CVD) growth process and may include post-growth treatment type IIa	