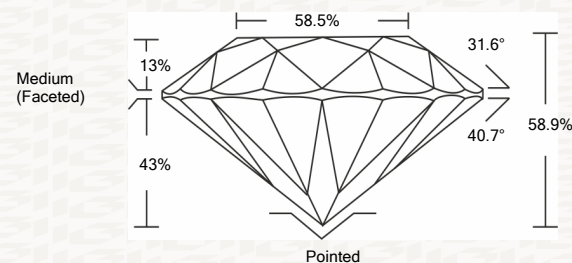




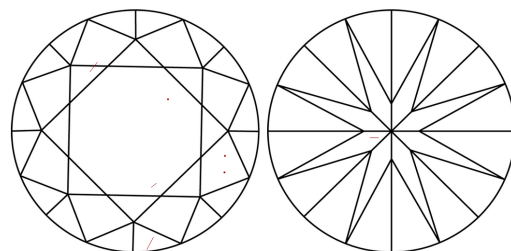
IGI GEMOLOGICAL REPORT

ADDITIONAL INFORMATION

PROPORTIONS



CLARITY CHARACTERISTICS



KEY TO SYMBOLS

Red symbols indicate internal characteristics. Green symbols indicate external characteristics.



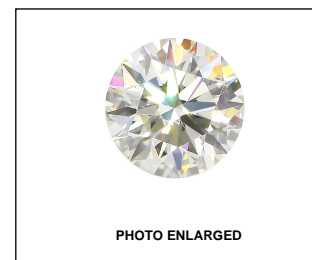
This Report is subject to the terms and conditions

© IGI 2000, edition 2019 all rights reserved.

GRADING SCALES

Table with 5 columns for Color and Clarity grading scales: CL, NC, FT, VLT, LT and FL, IF, VVS, VS, SI, I.

The laboratory grown diamond described in this Report (Report) has been graded, tested, analyzed, examined and/or inscribed by International Gemological Institute (IGI). A laboratory grown diamond is one that has essentially the same chemical, physical and optical properties as a mined diamond...

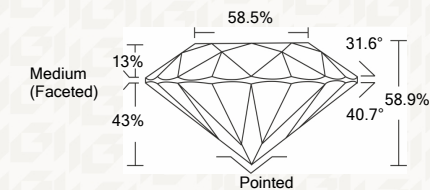


LASERSCRIBE SM



IGI LABORATORY GROWN DIAMOND GRADING REPORT

02/14/2020 IGI Report Number LG407938910 Shape and Cutting Style ROUND BRILLIANT Measurements 8.29 - 8.33 X 4.90 MM GRADING RESULTS Carat Weight 2.04 CARATS Color Grade J Clarity Grade VS 2 Cut Grade EXCELLENT



ADDITIONAL GRADING INFORMATION

Polish EXCELLENT Symmetry EXCELLENT Fluorescence NONE Inscription(s) LABGROWN IGI LG407938910

Comments: This Laboratory grown diamond was created by chemical vapor deposition process (CVD) Type IIa



IGI

02/14/2020 IGI Report No. LG407938910 ROUND BRILLIANT 8.29 - 8.33 X 4.90 MM Carat Weight 2.04 CARATS Color Grade J Clarity Grade VS 2 Cut Grade EXCELLENT Depth 58.9% Table 43.0% Girdle 58.5% Medium (Faceted) Pointed EXCELLENT Polish EXCELLENT Symmetry EXCELLENT Fluorescence NONE Inscription(s) LABGROWN IGI LG407938910 Comments: This Laboratory grown diamond was created by chemical vapor deposition process (CVD) Type IIa