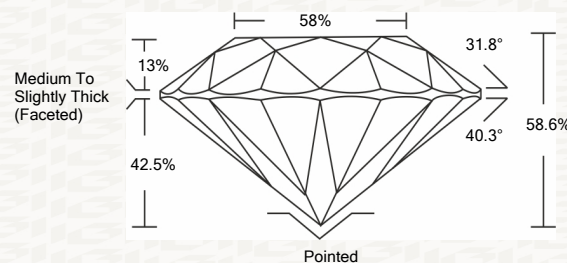




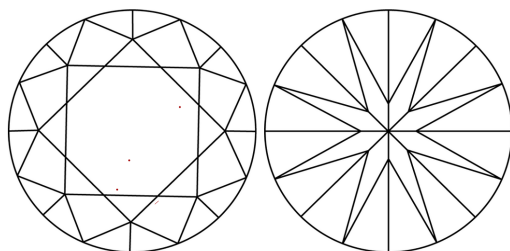
IGI GEMOLOGICAL REPORT

ADDITIONAL INFORMATION

PROPORTIONS



CLARITY CHARACTERISTICS



KEY TO SYMBOLS

Red symbols indicate internal characteristics. Green symbols indicate external characteristics.



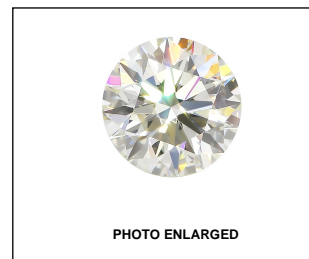
This Report is subject to the terms and conditions

© IGI 2000, edition 2019 all rights reserved.

GRADING SCALES

Table with 2 rows and 5 columns: COLOR GRADING SCALE (CL, NC, FT, VLT, LT) and CLARITY (10x) GRADING SCALE (FL, IF, VVS, VS, SI, I).

The laboratory grown diamond described in this Report (Report) has been graded, tested, analyzed, examined and/or inscribed by International Gemological Institute (IGI). A laboratory grown diamond is one that has essentially the same chemical, physical and optical properties as a mined diamond...

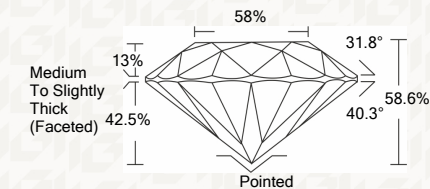


LASERSCRIBE SM



IGI LABORATORY GROWN DIAMOND GRADING REPORT

02/14/2020 IGI Report Number LG407938958 Shape and Cutting Style ROUND BRILLIANT Measurements 7.96 - 7.99 X 4.67 MM GRADING RESULTS Carat Weight 1.82 CARAT Color Grade J Clarity Grade VVS 2 Cut Grade EXCELLENT



ADDITIONAL GRADING INFORMATION

Polish EXCELLENT Symmetry EXCELLENT Fluorescence NONE Inscription(s) LABGROWN IGI LG407938958

Comments: This Laboratory grown diamond was created by chemical vapor deposition process (CVD) Type IIa



IGI

02/14/2020 IGI Report No. LG407938958 ROUND BRILLIANT 7.96 - 7.99 X 4.67 MM Carat Weight 1.82 CARAT Color Grade J Clarity Grade VVS 2 Cut Grade EXCELLENT Depth 58.6% Table 42.5% Girdle Medium To Slightly Thick (Faceted) Culet Pointed Polish EXCELLENT Symmetry EXCELLENT Fluorescence NONE Inscription(s) LABGROWN IGI LG407938958 Comments: This Laboratory grown diamond was created by chemical vapor deposition process (CVD) Type IIa