



IGI GEMOLOGICAL REPORT

IGI LABORATORY GROWN DIAMOND GRADING REPORT

02/14/2020

IGI Report Number LG407939119

Shape and Cutting Style ROUND BRILLIANT

Measurements 7.38 - 7.42 X 4.64 MM

GRADING RESULTS

Carat Weight 1.57 CARAT

Color Grade H

Clarity Grade SI 1

Cut Grade EXCELLENT

ADDITIONAL GRADING INFORMATION

Polish EXCELLENT

Symmetry EXCELLENT

Fluorescence NONE

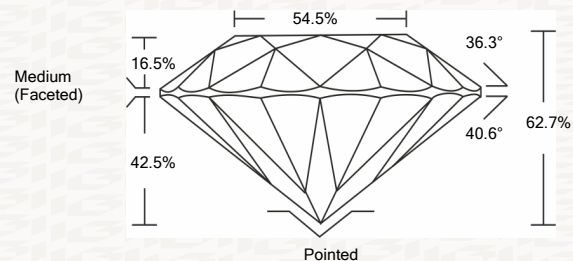
Inscription(s) LABGROWN IGI LG407939119

Comments: This Laboratory grown diamond was created by chemical vapor deposition process (CVD) Type IIa

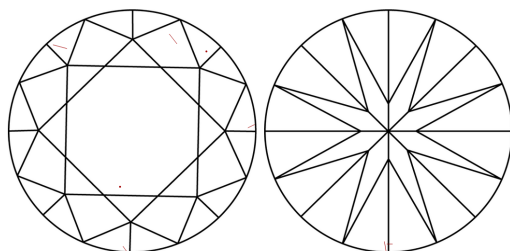


ADDITIONAL INFORMATION

PROPORTIONS



CLARITY CHARACTERISTICS



KEY TO SYMBOLS

Red symbols indicate internal characteristics. Green symbols indicate external characteristics.

This Report is subject to the terms and conditions

© IGI 2000, edition 2019 all rights reserved.

GRADING SCALES

Table with 2 rows and 5 columns showing grading scales for Color and Clarity.

The laboratory grown diamond described in this Report (Report) has been graded, tested, analyzed, examined and/or inscribed by International Gemological Institute (I.G.I.).

© INTERNATIONAL GEMOLOGICAL INSTITUTE, INC.

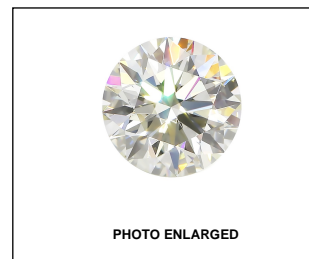


PHOTO ENLARGED



LASERSCRIBE SM



IGI LABORATORY GROWN DIAMOND GRADING REPORT

02/14/2020

IGI Report Number LG407939119

Shape and Cutting Style ROUND BRILLIANT

Measurements 7.38 - 7.42 X 4.64 MM

GRADING RESULTS

Carat Weight 1.57 CARAT

Color Grade H

Clarity Grade SI 1

Cut Grade EXCELLENT

ADDITIONAL GRADING INFORMATION

Polish EXCELLENT

Symmetry EXCELLENT

Fluorescence NONE

Inscription(s) LABGROWN IGI LG407939119

Comments: This Laboratory grown diamond was created by chemical vapor deposition process (CVD) Type IIa



IGI

02/14/2020 IGI Report No. LG407939119 ROUND BRILLIANT 7.38 - 7.42 X 4.64 MM 1.57 CARAT H SI 1 EXCELLENT 62.7% 54.5% Medium (Faceted) Pointed EXCELLENT EXCELLENT NONE LABGROWN IGI LG407939119

Comments: This Laboratory grown diamond was created by chemical vapor deposition process (CVD) Type IIa