



IGI GEMOLOGICAL REPORT

IGI LABORATORY GROWN DIAMOND GRADING REPORT

02/24/2020

IGI Report Number LG407945435

Shape and Cutting Style ROUND BRILLIANT

Measurements 8.02 - 8.04 X 5.00 MM

GRADING RESULTS

Carat Weight 2.00 CARATS

Color Grade J

Clarity Grade VS 1

Cut Grade EXCELLENT

ADDITIONAL GRADING INFORMATION

Polish EXCELLENT

Symmetry EXCELLENT

Fluorescence NONE

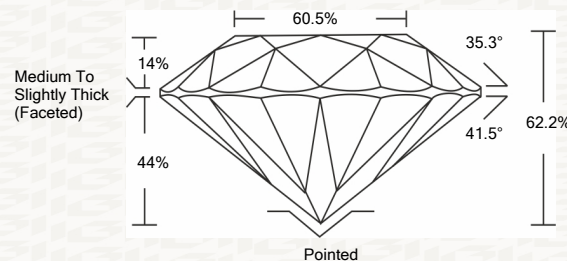
Inscription(s) LABGROWN IGI LG407945435

Comments: This Laboratory grown diamond was created by chemical vapor deposition process (CVD) Type IIa

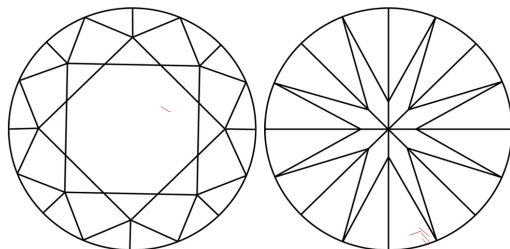


ADDITIONAL INFORMATION

PROPORTIONS



CLARITY CHARACTERISTICS



KEY TO SYMBOLS

Red symbols indicate internal characteristics. Green symbols indicate external characteristics.

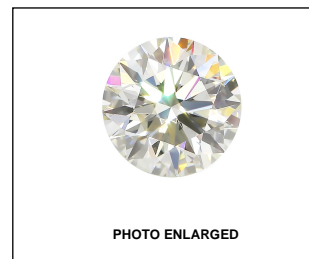
This Report is subject to the terms and conditions

© IGI 2000, edition 2019 all rights reserved.

GRADING SCALES

Table with 2 rows and 5 columns showing color and clarity grading scales.

The laboratory grown diamond described in this Report (Report) has been graded, tested, analyzed, examined and/or inscribed by International Gemological Institute (I.G.I.).



LASERSCRIBE SM



THE DOCUMENT WAS PRODUCED THE FOLLOWING SECURITY MEASURES: SPECIAL DOCUMENT BACKGROUND DESIGNS HOLOGRAM AND OTHER SECURITY FEATURES NOT LISTED AND DO NOT VIOLATE ANY INDUSTRY DUBLINES

IGI LABORATORY GROWN DIAMOND GRADING REPORT

02/24/2020

IGI Report Number LG407945435

Shape and Cutting Style ROUND BRILLIANT

Measurements 8.02 - 8.04 X 5.00 MM

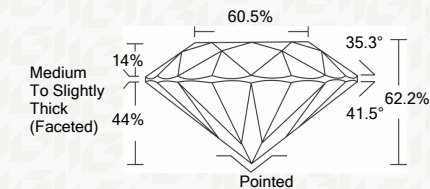
GRADING RESULTS

Carat Weight 2.00 CARATS

Color Grade J

Clarity Grade VS 1

Cut Grade EXCELLENT



ADDITIONAL GRADING INFORMATION

Polish EXCELLENT

Symmetry EXCELLENT

Fluorescence NONE

Inscription(s) LABGROWN IGI LG407945435

Comments: This Laboratory grown diamond was created by chemical vapor deposition process (CVD) Type IIa



IGI

02/24/2020 IGI Report No. LG407945435 ROUND BRILLIANT 8.02 - 8.04 X 5.00 MM 2.00 CARATS J VS 1 EXCELLENT 62.2% 60.5% Medium To Slightly Thick (Faceted) Pointed EXCELLENT EXCELLENT NONE LABGROWN IGI LG407945435

Comments: This Laboratory grown diamond was created by chemical vapor deposition process (CVD) Type IIa