



IGI GEMOLOGICAL REPORT

IGI LABORATORY GROWN DIAMOND GRADING REPORT

02/24/2020
IGI Report Number LG407945506
Shape and Cutting Style ROUND BRILLIANT
Measurements 7.37 - 7.39 X 4.54 MM

GRADING RESULTS

Carat Weight 1.51 CARAT
Color Grade J
Clarity Grade VS 2
Cut Grade IDEAL

ADDITIONAL GRADING INFORMATION

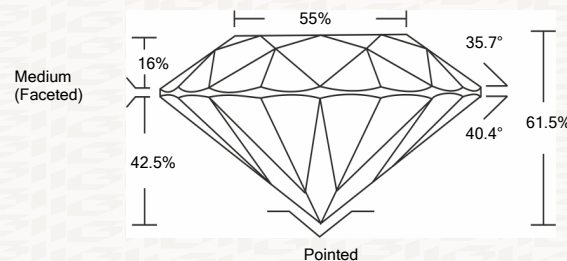
Polish EXCELLENT
Symmetry VERY GOOD
Fluorescence NONE
Inscription(s) LABGROWN IGI LG407945506

Comments: This Laboratory grown diamond was created by chemical vapor deposition process (CVD) Type IIa

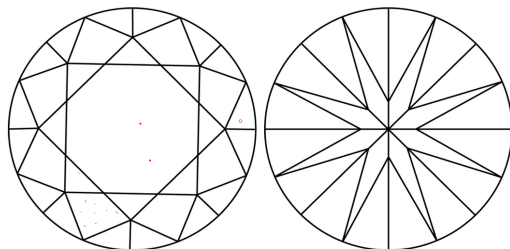


ADDITIONAL INFORMATION

PROPORTIONS



CLARITY CHARACTERISTICS



KEY TO SYMBOLS

Red symbols indicate internal characteristics.
Green symbols indicate external characteristics.

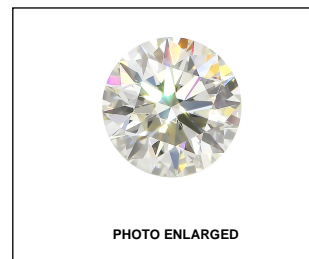
This Report is subject to the terms and conditions

© IGI 2000, edition 2019 all rights reserved.

GRADING SCALES

Table with 5 columns: CL (Colorless D-F), NC (Near Colorless G-J), FT (Faint K-M), VLT (Very Light N-R), LT (Light S-Z). Rows include Color Grading Scale and Clarity (10x) Grading Scale.

The laboratory grown diamond described in this Report (Report) has been graded, tested, analyzed, examined and/or inscribed by International Gemological Institute (IGI). A laboratory grown diamond is one that has essentially the same chemical, physical and optical properties as a mined diamond...



THE DOCUMENT WAS PRODUCED THE FOLLOWING SECURITY MEASURES: SPECIAL DOCUMENT... BACKGROUND DESIGNS HOLOGRAM AND OTHER SECURITY FEATURES NOT LISTED AND DO NOT VIOLATE ANY TRADEMARK OR PATENT RIGHTS BY ANY INDUSTRY DUPLICATES

IGI LABORATORY GROWN DIAMOND GRADING REPORT

02/24/2020
IGI Report Number LG407945506
Shape and Cutting Style ROUND BRILLIANT
Measurements 7.37 - 7.39 X 4.54 MM

GRADING RESULTS

Carat Weight 1.51 CARAT
Color Grade J
Clarity Grade VS 2
Cut Grade IDEAL

ADDITIONAL GRADING INFORMATION

Polish EXCELLENT
Symmetry VERY GOOD
Fluorescence NONE
Inscription(s) LABGROWN IGI LG407945506

Comments: This Laboratory grown diamond was created by chemical vapor deposition process (CVD) Type IIa



IGI

02/24/2020
IGI Report No. LG407945506
ROUND BRILLIANT
7.37 - 7.39 X 4.54 MM
Carat Weight 1.51 CARAT
Color Grade J
Clarity Grade VS 2
Cut Grade IDEAL
Depth 61.5%
Table 55%
Girdle Medium (Faceted)
Culet Pointed
Polish EXCELLENT
Symmetry VERY GOOD
Fluorescence NONE
Inscription(s) LABGROWN IGI LG407945506
Comments: This Laboratory grown diamond was created by chemical vapor deposition process (CVD) Type IIa