



ELECTRONIC COPY

LG407945682

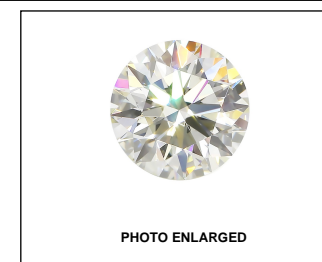
IGI GEMOLOGICAL REPORT

ADDITIONAL INFORMATION

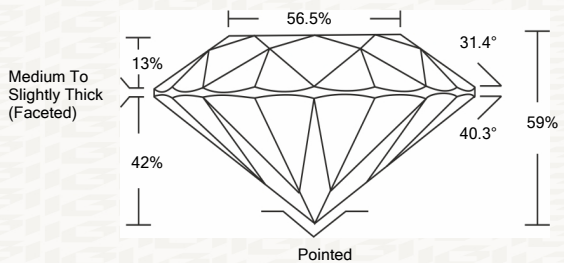
GRADING SCALES

Table with 5 columns: COLOR GRADING SCALE (CL, NC, FT, VLT, LT), CLARITY (10x) GRADING SCALE (FL, IF, VVS, VS, SI, I)

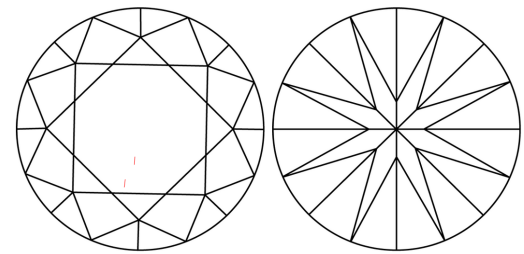
The laboratory grown diamond described in this Report (Report) has been graded, tested, analyzed, examined and/or inscribed by International Gemological Institute (I.G.I.).



PROPORTIONS



CLARITY CHARACTERISTICS



KEY TO SYMBOLS

Red symbols indicate internal characteristics. Green symbols indicate external characteristics.

This Report is subject to the terms and conditions © IGI 2000, edition 2019 all rights reserved.

IGI LABORATORY GROWN DIAMOND GRADING REPORT

02/25/2020

IGI Report Number LG407945682

Shape and Cutting Style ROUND BRILLIANT

Measurements 7.43 - 7.49 X 4.39 MM

GRADING RESULTS

Carat Weight 1.50 CARAT

Color Grade J

Clarity Grade VS 1

Cut Grade EXCELLENT

ADDITIONAL GRADING INFORMATION

Polish EXCELLENT

Symmetry VERY GOOD

Fluorescence NONE

Inscription(s) LABGROWN IGI LG407945682

Comments: This Laboratory grown diamond was created by chemical vapor deposition process (CVD) Type IIa



IGI LABORATORY GROWN DIAMOND GRADING REPORT

02/25/2020

IGI Report Number LG407945682

Shape and Cutting Style ROUND BRILLIANT

Measurements 7.43 - 7.49 X 4.39 MM

GRADING RESULTS

Carat Weight 1.50 CARAT

Color Grade J

Clarity Grade VS 1

Cut Grade EXCELLENT

ADDITIONAL GRADING INFORMATION

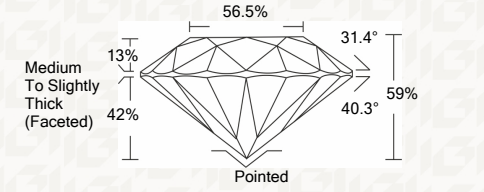
Polish EXCELLENT

Symmetry VERY GOOD

Fluorescence NONE

Inscription(s) LABGROWN IGI LG407945682

Comments: This Laboratory grown diamond was created by chemical vapor deposition process (CVD) Type IIa



THE DOCUMENT WAS PRODUCED THE FOLLOWING SECURITY MEASURES: SPECIAL DOCUMENT BACKGROUND DESIGNS HOLOGRAM AND OTHER SECURITY FEATURES NOT LISTED AND DO NOT VIOLATE ANY INDUSTRY DUBLINES



Summary table with columns: Report No, Shape, Carat Weight, Color Grade, Clarity Grade, Cut Grade, Table, Girdle, Culet, Polish, Symmetry, Fluorescence, Inscription(s), Comments