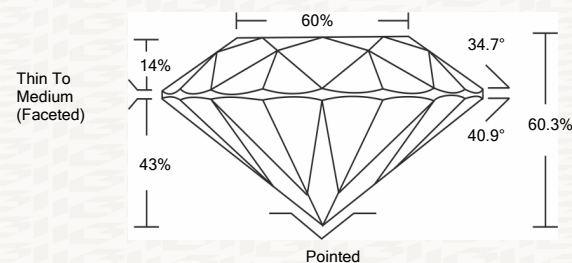




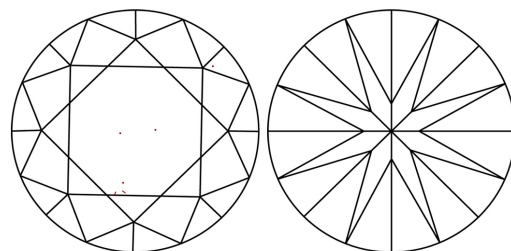
IGI GEMOLOGICAL REPORT

ADDITIONAL INFORMATION

PROPORTIONS



CLARITY CHARACTERISTICS



KEY TO SYMBOLS

Red symbols indicate internal characteristics. Green symbols indicate external characteristics.

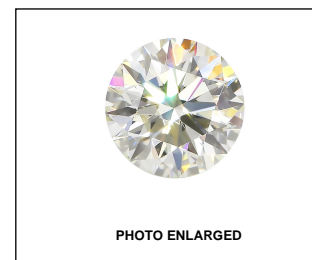
This Report is subject to the terms and conditions

© IGI 2000, edition 2019 all rights reserved.

GRADING SCALES

Table with 2 rows and 5 columns showing grading scales for Color and Clarity.

The laboratory grown diamond described in this Report (Report) has been graded, tested, analyzed, examined and/or inscribed by International Gemological Institute (I.G.I.).



LASERSCRIBE SM



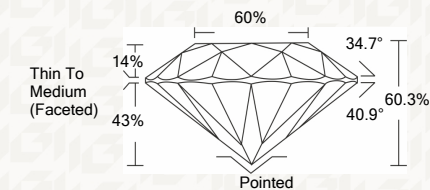
THE DOCUMENT WAS PRODUCED THE FOLLOWING SECURITY MEASURES: SPECIAL DOCUMENT PAPER, SECURITY MARK, BACKGROUND DESIGNS HOLOGRAM AND OTHER SECURITY FEATURES NOT LISTED AND DO NOT VIOLATE ANY INDUSTRY DUBLINES

IGI LABORATORY GROWN DIAMOND GRADING REPORT

03/04/2020 IGI Report Number LG407947093 Shape and Cutting Style ROUND BRILLIANT Measurements 6.66 - 6.73 X 4.04 MM

GRADING RESULTS

Carat Weight 1.11 CARAT Color Grade G Clarity Grade VVS 2 Cut Grade EXCELLENT



ADDITIONAL GRADING INFORMATION

Polish EXCELLENT Symmetry EXCELLENT Fluorescence NONE Inscription(s) LABGROWN IGI LG407947093

Comments: This Laboratory grown diamond was created by chemical vapor deposition process (CVD) Type IIa



IGI

03/04/2020 IGI Report No. LG407947093 ROUND BRILLIANT 6.66 - 6.73 X 4.04 MM 1.11 CARAT G VVS 2 EXCELLENT 60.3% 60% Thin To Medium (Faceted) Pointed EXCELLENT EXCELLENT NONE LABGROWN IGI LG407947093

Comments: This Laboratory grown diamond was created by chemical vapor deposition process (CVD) Type IIa

