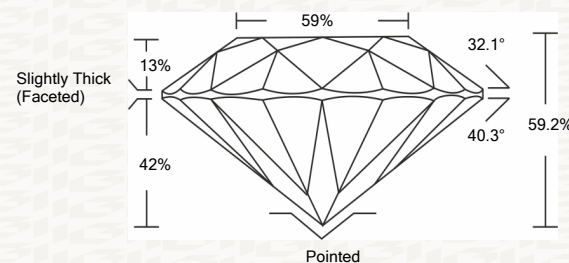




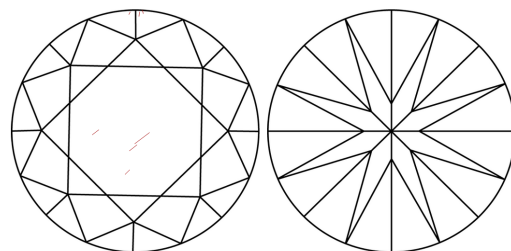
IGI GEMOLOGICAL REPORT

ADDITIONAL INFORMATION

PROPORTIONS



CLARITY CHARACTERISTICS



KEY TO SYMBOLS

Red symbols indicate internal characteristics. Green symbols indicate external characteristics.

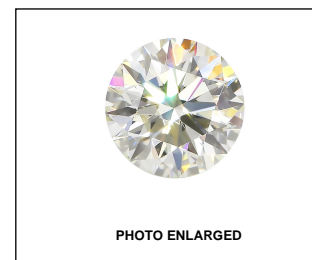
This Report is subject to the terms and conditions

© IGI 2000, edition 2019 all rights reserved.

GRADING SCALES

Table with 2 rows and 5 columns showing grading scales for Color and Clarity.

The laboratory grown diamond described in this Report (Report) has been graded, tested, analyzed, examined and/or inscribed by International Gemological Institute (I.G.I.).



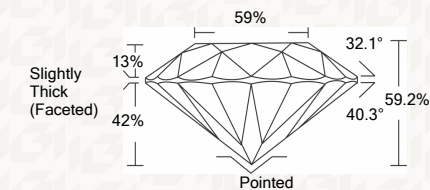
LASERSCRIBE SM



THE DOCUMENT WAS PRODUCED THE FOLLOWING SECURITY MEASURES: SPECIAL DOCUMENT BACKGROUND DESIGNS HOLOGRAM AND OTHER SECURITY FEATURES NOT LISTED AND DO NOT VIOLATE ANY INDUSTRY DUBLINES

IGI LABORATORY GROWN DIAMOND GRADING REPORT

05/18/2020 IGI Report Number LG407948757 Shape and Cutting Style ROUND BRILLIANT Measurements 7.67 - 7.72 X 4.55 MM GRADING RESULTS Carat Weight 1.66 CARAT Color Grade K Clarity Grade SI 1 Cut Grade EXCELLENT



ADDITIONAL GRADING INFORMATION

Polish EXCELLENT Symmetry EXCELLENT Fluorescence NONE Inscription(s) LABGROWN IGI LG407948757

Comments: This Laboratory grown diamond was created by chemical vapor deposition process (CVD) Type IIa



IGI

05/18/2020 IGI Report No. LG407948757 ROUND BRILLIANT 7.67 - 7.72 X 4.55 MM Carat Weight 1.66 CARAT Color Grade K Clarity Grade SI 1 Cut Grade EXCELLENT Depth 59.2% Table 42% Girdle Slightly Thick (Faceted) Culet Pointed Polish EXCELLENT Symmetry EXCELLENT Fluorescence NONE Inscription(s) LABGROWN IGI LG407948757 Comments: This Laboratory grown diamond was created by chemical vapor deposition process (CVD) Type IIa

