



IGI GEMOLOGICAL REPORT

IGI LABORATORY GROWN DIAMOND GRADING REPORT

03/06/2020

IGI Report Number LG407950356

Shape and Cutting Style HEART BRILLIANT

Measurements 7.40 X 8.22 X 4.48 MM

GRADING RESULTS

Carat Weight 1.57 CARAT

Color Grade G

Clarity Grade VVS 2

ADDITIONAL GRADING INFORMATION

Polish EXCELLENT

Symmetry EXCELLENT

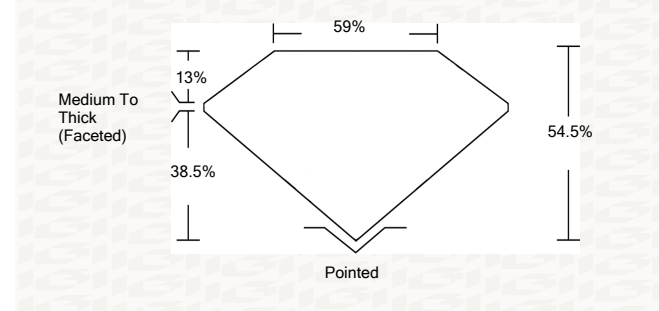
Fluorescence NONE

Inscription(s) LABGROWN IGI LG407950356

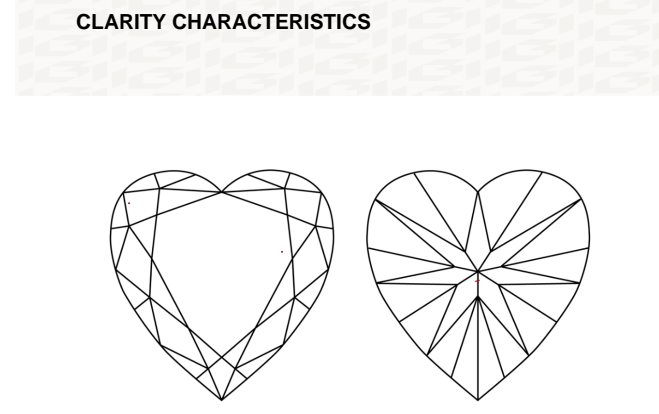
Comments: This Laboratory grown diamond was created by chemical vapor deposition process (CVD) Type IIa

ADDITIONAL INFORMATION

PROPORTIONS



CLARITY CHARACTERISTICS



KEY TO SYMBOLS

Red symbols indicate internal characteristics. Green symbols indicate external characteristics.

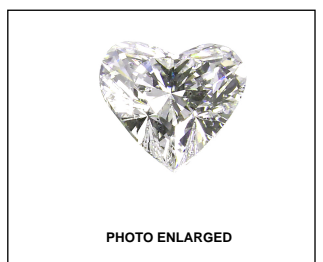
This Report is subject to the terms and conditions

© IGI 2000, edition 2019 all rights reserved.

GRADING SCALES

Table with 5 columns for Color Grading Scale (CL, NC, FT, VLT, LT) and Clarity (10x) Grading Scale (FL, IF, VVS, VS, SI, I).

The laboratory grown diamond described in this Report (Report) has been graded, tested, analyzed, examined and/or inscribed by International Gemological Institute (IGI). A laboratory grown diamond is one that has essentially the same chemical, physical and optical properties as a mined diamond...



LASERSCRIBE SM



THE DOCUMENT WAS PRODUCED THE FOLLOING SECURITY MEASURES: SPECIAL DOCUMENT PAPER, INK, SECURITY WATERMARK, BACKGROUND DESIGNS HOLOGRAM AND OTHER SECURITY FEATURES NOT LISTED AND DO EXCEED DOCUMENT SECURITY INDUSTRY DUDLINES

IGI LABORATORY GROWN DIAMOND GRADING REPORT

03/06/2020

IGI Report Number LG407950356

Shape and Cutting Style HEART BRILLIANT

Measurements 7.40 X 8.22 X 4.48 MM

Carat Weight 1.57 CARAT

Color Grade G

Clarity Grade VVS 2

ADDITIONAL GRADING INFORMATION

Polish EXCELLENT

Symmetry EXCELLENT

Fluorescence NONE

Inscription(s) LABGROWN IGI LG407950356

Comments: This Laboratory grown diamond was created by chemical vapor deposition process (CVD) Type IIa

This Laboratory grown diamond was created by chemical vapor deposition process (CVD) Type IIa

This Laboratory grown diamond was created by chemical vapor deposition process (CVD) Type IIa

This Laboratory grown diamond was created by chemical vapor deposition process (CVD) Type IIa

This Laboratory grown diamond was created by chemical vapor deposition process (CVD) Type IIa

This Laboratory grown diamond was created by chemical vapor deposition process (CVD) Type IIa

This Laboratory grown diamond was created by chemical vapor deposition process (CVD) Type IIa

This Laboratory grown diamond was created by chemical vapor deposition process (CVD) Type IIa

This Laboratory grown diamond was created by chemical vapor deposition process (CVD) Type IIa

This Laboratory grown diamond was created by chemical vapor deposition process (CVD) Type IIa

This Laboratory grown diamond was created by chemical vapor deposition process (CVD) Type IIa

This Laboratory grown diamond was created by chemical vapor deposition process (CVD) Type IIa

This Laboratory grown diamond was created by chemical vapor deposition process (CVD) Type IIa



IGI



Summary of report details: 03/06/2020, IGI Report No LG407950356, HEART BRILLIANT, 7.40 X 8.22 X 4.48 MM, Carat Weight 1.57 CARAT, Color Grade G, Clarity Grade VVS 2, Depth 64.6%, Table 56%, Medium To Thick (Faceted), Polish EXCELLENT, Symmetry EXCELLENT, Fluorescence NONE, Inscription(s) LABGROWN IGI LG407950356. Comments: This laboratory grown diamond was created by chemical vapor deposition process (CVD) Type IIa