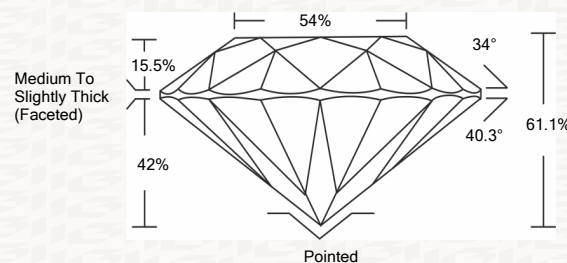




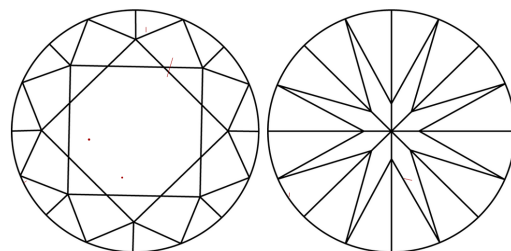
IGI GEMOLOGICAL REPORT

ADDITIONAL INFORMATION

PROPORTIONS



CLARITY CHARACTERISTICS



KEY TO SYMBOLS

Red symbols indicate internal characteristics. Green symbols indicate external characteristics.

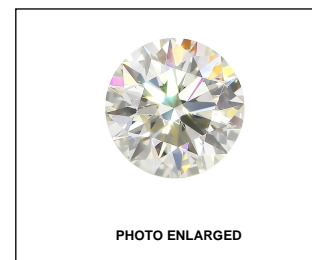
This Report is subject to the terms and conditions

© IGI 2000, edition 2019 all rights reserved.

GRADING SCALES

Table with 2 rows and 5 columns showing grading scales for Color and Clarity.

The laboratory grown diamond described in this Report (Report) has been graded, tested, analyzed, examined and/or inscribed by International Gemological Institute (I.G.I.).



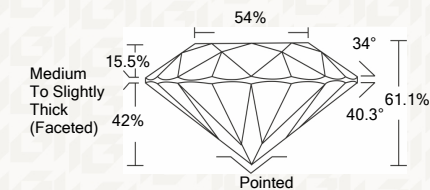
THE DOCUMENT WAS PRODUCED THE FOLLOWING SECURITY MEASURES: SPECIAL DOCUMENT BACKGROUND DESIGNS HOLOGRAM AND OTHER SECURITY FEATURES NOT LISTED AND DO NOT VIOLATE TRADEMARK OR INDUSTRY DUBLINES

IGI LABORATORY GROWN DIAMOND GRADING REPORT

05/20/2020 IGI Report Number LG407950803 Shape and Cutting Style ROUND BRILLIANT Measurements 7.67 - 7.71 X 4.70 MM

GRADING RESULTS

Carat Weight 1.70 CARAT Color Grade K Clarity Grade VS 2 Cut Grade IDEAL



ADDITIONAL GRADING INFORMATION

Polish EXCELLENT Symmetry EXCELLENT Fluorescence NONE Inscription(s) LABGROWN IGI LG407950803

Comments: This Laboratory grown diamond was created by chemical vapor deposition process (CVD) Type IIa



IGI

05/20/2020 IGI Report No. LG407950803 ROUND BRILLIANT 7.67 - 7.71 X 4.70 MM Carat Weight 1.70 CARAT Color Grade K Clarity Grade VS 2 Depth 61.1% Table 54% Girdle Medium To Slightly Thick (Faceted) Polished EXCELLENT Symmetry EXCELLENT Fluorescence NONE Inscription(s) LABGROWN IGI LG407950803 Comments: This Laboratory grown diamond was created by chemical vapor deposition process (CVD) Type IIa

