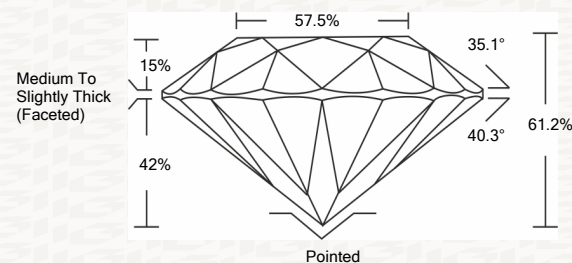




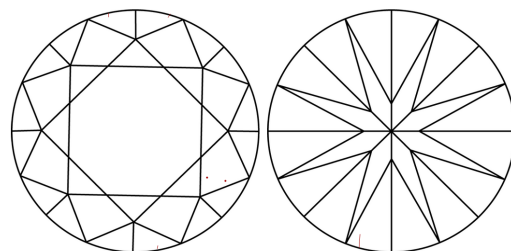
IGI GEMOLOGICAL REPORT

ADDITIONAL INFORMATION

PROPORTIONS



CLARITY CHARACTERISTICS



KEY TO SYMBOLS

Red symbols indicate internal characteristics. Green symbols indicate external characteristics.

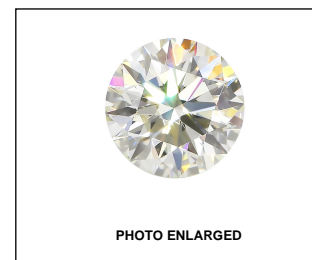
This Report is subject to the terms and conditions

© IGI 2000, edition 2019 all rights reserved.

GRADING SCALES

Table with 2 rows and 5 columns showing grading scales for Color and Clarity.

The laboratory grown diamond described in this Report (Report) has been graded, tested, analyzed, examined and/or inscribed by International Gemological Institute (I.G.I.).



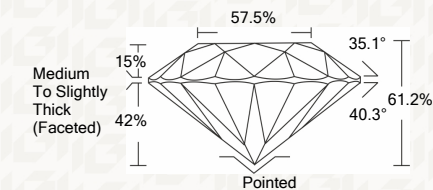
THE DOCUMENT WAS PRODUCED THE FOLLOWING SECURITY MEASURES: SPECIAL DOCUMENT SECURITY PAPER, SECURITY MARK, BACKGROUND DESIGNS HOLOGRAM AND OTHER SECURITY FEATURES NOT LISTED AND DO NOT VIOLATE ANY INDUSTRY DUBLINES

IGI LABORATORY GROWN DIAMOND GRADING REPORT

03/02/2020 IGI Report Number LG407950906 Shape and Cutting Style ROUND BRILLIANT Measurements 7.67 - 7.69 X 4.70 MM

GRADING RESULTS

Carat Weight 1.73 CARAT Color Grade K Clarity Grade VS 1 Cut Grade IDEAL



ADDITIONAL GRADING INFORMATION

Polish EXCELLENT Symmetry EXCELLENT Fluorescence NONE Inscription(s) LABGROWN IGI LG407950906

Comments: This Laboratory grown diamond was created by chemical vapor deposition process (CVD) Type IIa



IGI

03/02/2020 IGI Report No. LG407950906 ROUND BRILLIANT 7.67 - 7.69 X 4.70 MM 1.73 CARAT K VS 1 IDEAL 61.2% 57.5% Medium To Slightly Thick (Faceted) Pointed EXCELLENT EXCELLENT NONE LABGROWN IGI LG407950906

Comments: This Laboratory grown diamond was created by chemical vapor deposition process (CVD) Type IIa

