



IGI GEMOLOGICAL REPORT

IGI LABORATORY GROWN DIAMOND GRADING REPORT

05/23/2020

IGI Report Number **LG414082010**

Shape and Cutting Style **HEART BRILLIANT**

Measurements **5.97 X 7.13 X 4.01 MM**

GRADING RESULTS

Carat Weight **1.01 CARAT**

Color Grade **I**

Clarity Grade **SI 1**

ADDITIONAL GRADING INFORMATION

Polish **EXCELLENT**

Symmetry **VERY GOOD**

Fluorescence **NONE**

Inscription(s) **LABGROWN IGI LG414082010**

Comments: This Laboratory grown diamond was created by chemical vapor deposition process (CVD) Type IIa

ADDITIONAL INFORMATION

PROPORTIONS

Medium To Thick (Faceted)

Pointed

CLARITY CHARACTERISTICS

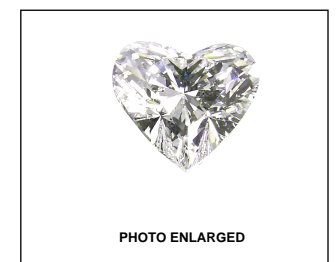
GRADING SCALES

COLOR GRADING SCALE	CL	NC	FT	VL	LT	
	COLORLESS D-F	NEAR COLORLESS G-J	FAINT K-M	VERY LIGHT N-R	LIGHT S-Z	
CLARITY (10X) GRADING SCALE	FL	IF	VVS	VS	SI	I
	FLAWLESS INTERNALLY FLAWLESS	VERY VERY SLIGHTLY INCLUDED	VERY SLIGHTLY INCLUDED	SLIGHTLY INCLUDED	INCLUDED	

The laboratory grown diamond described in this Report (Report) has been graded, tested, analyzed, examined and/or inscribed by International Gemological Institute (IGI). A laboratory grown diamond is one that has essentially the same chemical, physical and optical properties as a mined diamond, with the exception of being grown by man (a manufactured product). IGI employs and utilizes those techniques and equipment currently available to IGI, including, without limitation, 10X magnification, corrected triplet loupe, binocular microscope, master color comparison stones, non-contact-optical measuring device, Diamond Sure™, Diamond View™, Spectrophotometer and such other instruments and/or processes as deemed appropriate by IGI. This Report includes advanced security features. A duly accredited gemologist or jeweler can advise you with respect to the importance of and interrelationship between cut, color, clarity and carat weight.

THIS REPORT IS NEITHER A GUARANTEE, VALUATION, NOR APPRAISAL OF THE GEMSTONE DESCRIBED HEREIN. PLEASE REVIEW THE LIMITATIONS AND RESTRICTIONS SET FORTH ONLINE. FOR ADDITIONAL INFORMATION, IMPORTANT LIMITATIONS AND DISCLAIMERS, PLEASE GO TO WWW.IGI.ORG OR CALL 1-888-BUY-IGI.

© INTERNATIONAL GEMOLOGICAL INSTITUTE, INC.



LASERSCRIBE SM



THIS DOCUMENT WAS PRODUCED THE FOLLOING SECURITY MEASURES: SPECIAL DOCUMENT PAPER, INK SCREEN WATERMARK, BACKGROUND DESIGNS HOLOGRAM AND OTHER SECURITY FEATURES NOT LISTED AND DO EXCEED DOCUMENT SECURITY INDUSTRY DUDLINES

IGI LABORATORY GROWN DIAMOND GRADING REPORT

05/23/2020

IGI Report Number **LG414082010**

Shape and Cutting Style **HEART BRILLIANT**

Measurements **5.97 X 7.13 X 4.01 MM**

GRADING RESULTS

Carat Weight **1.01 CARAT**

Color Grade **I**

Clarity Grade **SI 1**

ADDITIONAL GRADING INFORMATION

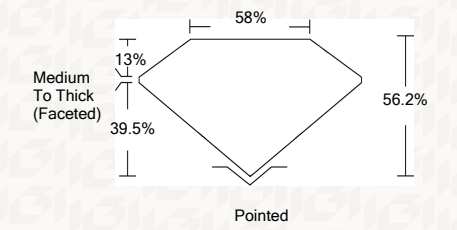
Polish **EXCELLENT**

Symmetry **VERY GOOD**

Fluorescence **NONE**

Inscription(s) **LABGROWN IGI LG414082010**

Comments: This Laboratory grown diamond was created by chemical vapor deposition process (CVD) Type IIa



IGI

05/23/2020
IGI Report No LG414082010
HEART BRILLIANT
5.97 X 7.13 X 4.01 MM
Carat Weight 1.01 CARAT
Color Grade I
Clarity Grade SI 1
Depth 56.2%
Table 13%
Medium To Thick (Faceted)
Girdle 58%
Culet None
Polish EXCELLENT
Symmetry VERY GOOD
Fluorescence NONE
Inscription(s) LABGROWN IGI LG414082010
Comments: This laboratory grown diamond was created by chemical vapor deposition process (CVD) Type IIa



KEY TO SYMBOLS

Red symbols indicate internal characteristics.
Green symbols indicate external characteristics.

This Report is subject to the terms and conditions
© IGI 2000, edition 2019 all rights reserved.