



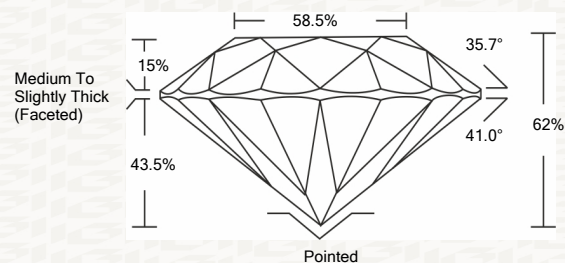
ELECTRONIC COPY

LG425065175

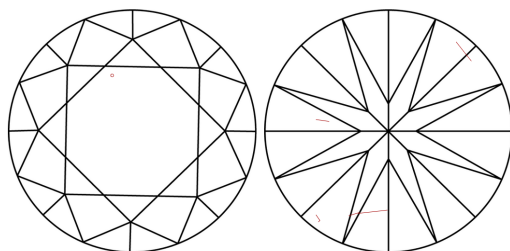
IGI GEMOLOGICAL REPORT

ADDITIONAL INFORMATION

PROPORTIONS



CLARITY CHARACTERISTICS



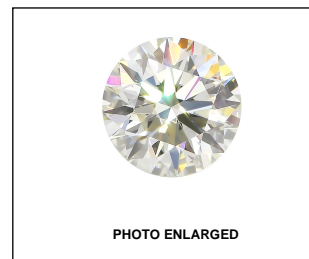
KEY TO SYMBOLS

Red symbols indicate internal characteristics. Green symbols indicate external characteristics.

GRADING SCALES

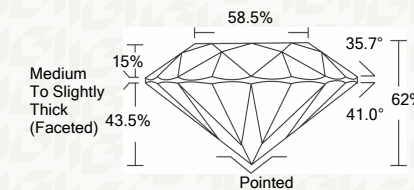
Table with 2 rows and 5 columns showing grading scales for Color and Clarity.

The laboratory grown diamond described in this Report (Report) has been graded, tested, analyzed, examined and/or inscribed by International Gemological Institute (I.G.I.).



IGI LABORATORY GROWN DIAMOND GRADING REPORT

07/14/2020 IGI Report Number LG425065175 Shape and Cutting Style ROUND BRILLIANT Measurements 7.40 - 7.43 X 4.60 MM GRADING RESULTS Carat Weight 1.56 CARAT Color Grade I Clarity Grade SI 2 Cut Grade IDEAL



ADDITIONAL GRADING INFORMATION

Polish EXCELLENT Symmetry EXCELLENT Fluorescence NONE Inscription(s) LABGROWN IGI LG425065175



IGI

IGI LABORATORY GROWN DIAMOND GRADING REPORT

07/14/2020 IGI Report Number LG425065175 Shape and Cutting Style ROUND BRILLIANT Measurements 7.40 - 7.43 X 4.60 MM

GRADING RESULTS

Carat Weight 1.56 CARAT Color Grade I Clarity Grade SI 2 Cut Grade IDEAL

ADDITIONAL GRADING INFORMATION

Polish EXCELLENT Symmetry EXCELLENT Fluorescence NONE Inscription(s) LABGROWN IGI LG425065175



This Report is subject to the terms and conditions

© IGI 2000, edition 2019 all rights reserved.

THE DOCUMENT WAS PRODUCED THE FOLLOWING SECURITY MEASURES: SPECIAL DOCUMENT PAPER, INK SCREENS, WATERMARK, BACKGROUND DESIGNS, HOLOGRAM AND OTHER SECURITY FEATURES NOT LISTED AND DO EXCEED DOCUMENT SECURITY INDUSTRY DUDLINES

07/14/2020 IGI Report No. LG425065175 ROUND BRILLIANT 7.40 - 7.43 X 4.60 MM 1.56 CARAT I SI 2 IDEAL 62% 68.5% Medium To Slightly Thick (Faceted) Pointed EXCELLENT EXCELLENT NONE LABGROWN IGI LG425065175