



**EDUCATIONAL AND SCIENTIFIC LABORATORY  
FOR THE IDENTIFICATION AND GRADING  
OF DIAMONDS AND COLORED STONES**

**LG425067434**

COLOR GRADING SCALE	CL		NC	FT	VLT	LT
	COLORLESS D-F		NEAR COLORLESS G-J	FAINT K-M	VERY LIGHT N-R	LIGHT S-Z
CLARITY (10x) GRADING SCALE	FL	IF	VVS	VS	SI	I
	FLAWLESS INTERNALLY FLAWLESS		VERY VERY SLIGHTLY INCLUDED	VERY SLIGHTLY INCLUDED	SLIGHTLY INCLUDED	INCLUDED

© INTERNATIONAL GEMOLOGICAL INSTITUTE, INC.



PHOTO ENLARGED

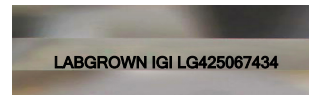
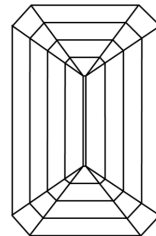
**LASERSCRIBE** <sup>SM</sup>

Diagram illustrating the cross-section of a diamond-shaped structure. The dimensions are labeled as follows:

- Top width: 66%
- Top-left corner: 13.5%
- Left side: 50.5%
- Right side: 69.2%
- Bottom width: Long

The left side is also labeled "Slightly Thick".

## A diagram of a rectangular frame with a double-line border. Inside the frame, there are three red dots arranged vertically in the center.



Red symbols indicate internal characteristics.  
Green symbols indicate external characteristics.

© IGI 2000, edition 2019 all rights reserved.

**IGI**

07/25/2020	IGI Report No LG42067434	
EMERALD CUT		
7.90 X 5.97 X 4.13 MM		
Carat Weight	2.01 CARATS	
Color Grade	J	
Clarity Grade	VS 1	
Depth	69.2%	
Table	86%	
Girdle	Slightly Thick	
Culet	Long	
Polish	EXCELLENT	
Symmetry	EXCELLENT	
Fluorescence	NONE	
Inscriptions(s)	LABGROWN IGI	
	LG42067434	