



IGI GEMOLOGICAL REPORT

IGI LABORATORY GROWN DIAMOND GRADING REPORT

08/18/2020
IGI Report Number LG436046644
Shape and Cutting Style ROUND BRILLIANT
Measurements 7.75 - 7.80 X 4.65 MM

GRADING RESULTS

Carat Weight 1.74 CARAT
Color Grade I
Clarity Grade SI 2
Cut Grade EXCELLENT

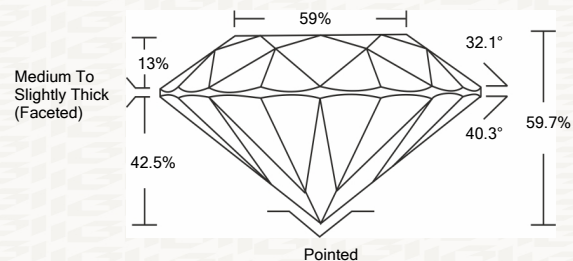
ADDITIONAL GRADING INFORMATION

Polish EXCELLENT
Symmetry EXCELLENT
Fluorescence NONE
Inscription(s) LABGROWN IGI LG436046644

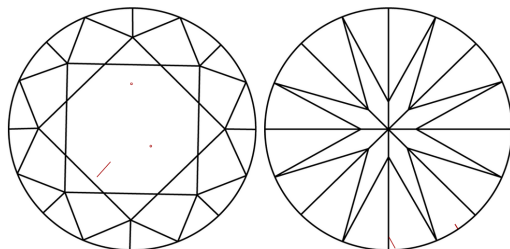


ADDITIONAL INFORMATION

PROPORTIONS



CLARITY CHARACTERISTICS



KEY TO SYMBOLS

Red symbols indicate internal characteristics.
Green symbols indicate external characteristics.

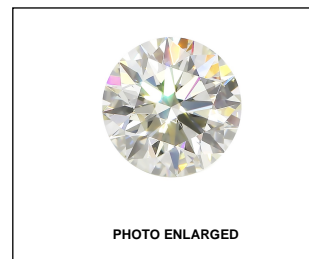
This Report is subject to the terms and conditions

© IGI 2000, edition 2019 all rights reserved.

GRADING SCALES

Table with 2 rows and 5 columns: COLOR GRADING SCALE (CL, NC, FT, VLT, LT) and CLARITY (10x) GRADING SCALE (FL, IF, VVS, VS, SI, I).

The laboratory grown diamond described in this Report (Report) has been graded, tested, analyzed, examined and/or inscribed by International Gemological Institute (I.G.I.).



IGI LABORATORY GROWN DIAMOND GRADING REPORT

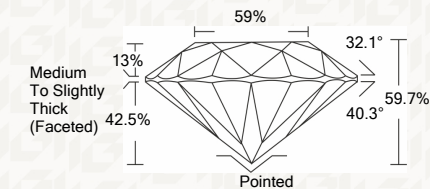
08/18/2020
IGI Report Number LG436046644
Shape and Cutting Style ROUND BRILLIANT
Measurements 7.75 - 7.80 X 4.65 MM

GRADING RESULTS

Carat Weight 1.74 CARAT
Color Grade I
Clarity Grade SI 2
Cut Grade EXCELLENT

ADDITIONAL GRADING INFORMATION

Polish EXCELLENT
Symmetry EXCELLENT
Fluorescence NONE
Inscription(s) LABGROWN IGI LG436046644



IGI

08/18/2020
IGI Report No. LG436046644
ROUND BRILLIANT
7.75 - 7.80 X 4.65 MM
Carat Weight 1.74 CARAT
Color Grade I
Clarity Grade SI 2
Cut Grade EXCELLENT
Depth 59.7%
Table 58%
Girdle Medium To Slightly Thick (Faceted)
Culet Pointed
Polish EXCELLENT
Symmetry EXCELLENT
Fluorescence NONE
Inscription(s) LABGROWN IGI LG436046644