



IGI GEMOLOGICAL REPORT

IGI LABORATORY GROWN DIAMOND GRADING REPORT

08/19/2020
IGI Report Number LG436046932
Shape and Cutting Style ROUND BRILLIANT
Measurements 7.66 - 7.69 X 4.63 MM

GRADING RESULTS

Carat Weight 1.70 CARAT
Color Grade I
Clarity Grade SI 2
Cut Grade IDEAL

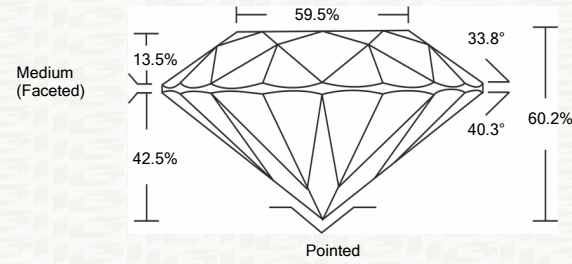
ADDITIONAL GRADING INFORMATION

Polish EXCELLENT
Symmetry EXCELLENT
Fluorescence NONE
Inscription(s) LABGROWN IGI LG436046932

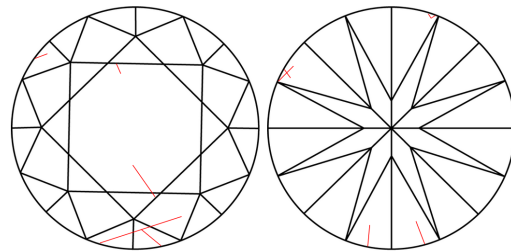


ADDITIONAL INFORMATION

PROPORTIONS



CLARITY CHARACTERISTICS



KEY TO SYMBOLS

Red symbols indicate internal characteristics.
Green symbols indicate external characteristics.

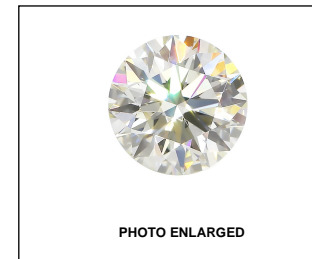
This Report is subject to the terms and conditions

© IGI 2000, edition 2019 all rights reserved.

GRADING SCALES

Table with 5 columns: COLOR GRADING SCALE (CL, NC, FT, VLT, LT), CLARITY (10x) GRADING SCALE (FL, IF, VVS, VS, SI, I)

The laboratory grown diamond described in this Report (Report) has been graded, tested, analyzed, examined and/or inscribed by International Gemological Institute (I.G.I.).

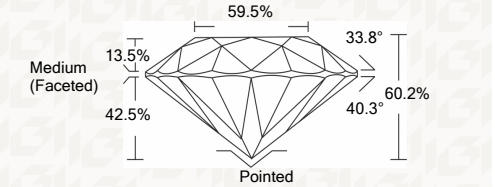


IGI LABORATORY GROWN DIAMOND GRADING REPORT

08/19/2020
IGI Report Number LG436046932
Shape and Cutting Style ROUND BRILLIANT
Measurements 7.66 - 7.69 X 4.63 MM

GRADING RESULTS

Carat Weight 1.70 CARAT
Color Grade I
Clarity Grade SI 2
Cut Grade IDEAL



ADDITIONAL GRADING INFORMATION

Polish EXCELLENT
Symmetry EXCELLENT
Fluorescence NONE
Inscription(s) LABGROWN IGI LG436046932



IGI

Summary box containing report details: 08/19/2020, IGI Report No. LG436046932, ROUND BRILLIANT, 7.66 - 7.69 X 4.63 MM, 1.70 CARAT, I, SI 2, IDEAL, 80.2%, 60.2%, 59.5%, Medium (Faceted), EXCELLENT, EXCELLENT, NONE, LABGROWN IGI LG436046932