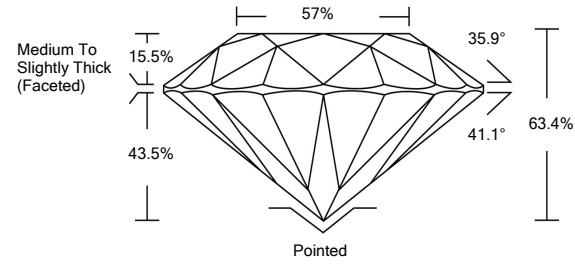




LG436074803

LABORATORY GROWN DIAMOND REPORT

PROPORTIONS



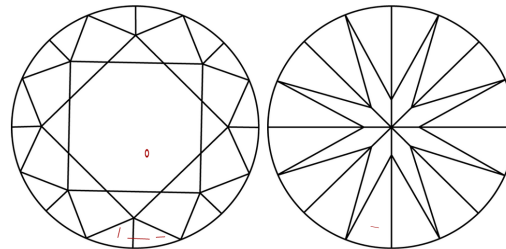
GRADING SCALES

Table with 5 columns for Color (CL, NC, FT, VLT, LT) and Clarity (FL, IF, VVS, VS, SI, I) grading scales.

The laboratory grown diamond described in this Report (Report) has been graded, tested, analyzed, examined and/or inscribed by International Gemological Institute (IGI). A laboratory grown diamond is one that has essentially the same chemical, physical and optical properties as a mined diamond...

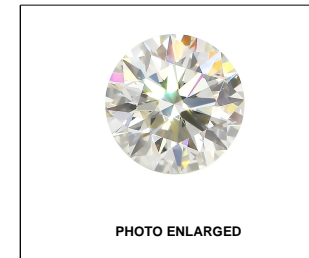
© INTERNATIONAL GEMOLOGICAL INSTITUTE, INC.

CLARITY CHARACTERISTICS



KEY TO SYMBOLS

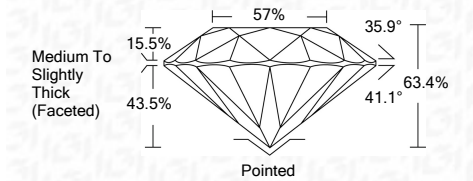
Red symbols indicate internal characteristics. Green symbols indicate external characteristics.



LABGROWN IGI LG436074803

LASERSCRIBE<sup>SM</sup>

06/01/2021 IGI Report Number LG436074803 Shape and Cutting Style ROUND BRILLIANT Measurements 6.70 - 6.72 x 4.26 mm GRADING RESULTS Carat Weight 1.19 CARAT Color Grade I Clarity Grade SI 1 Cut Grade EXCELLENT



ADDITIONAL GRADING INFORMATION

Polish EXCELLENT Symmetry EXCELLENT Fluorescence NONE Inscription(s) LABGROWN IGI LG436074803

Comments: This Laboratory Grown Diamond was created by Chemical Vapor Deposition (CVD) growth process and may include post-growth treatment. Type IIa



IGI

06/01/2021 IGI Report No. LG436074803 ROUND BRILLIANT 6.70 - 6.72 x 4.26 mm 1.19 CARAT I SI 1 EXCELLENT 63.4% 57% Medium To Slightly Thick (Faceted) Pointed EXCELLENT EXCELLENT NONE LABGROWN IGI LG436074803



This Laboratory Grown Diamond was created by Chemical Vapor Deposition (CVD) growth process and may include post-growth treatment. Type IIa