



IGI GEMOLOGICAL REPORT

IGI LABORATORY GROWN DIAMOND GRADING REPORT

09/21/2020
IGI Report Number LG440012054
Shape and Cutting Style ROUND BRILLIANT
Measurements 8.44 - 8.47 X 5.00 MM

GRADING RESULTS

Carat Weight 2.20 CARATS
Color Grade I
Clarity Grade SI 2
Cut Grade EXCELLENT

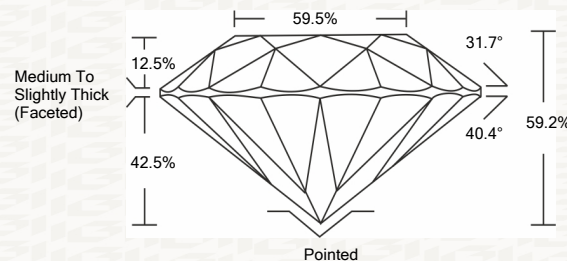
ADDITIONAL GRADING INFORMATION

Polish EXCELLENT
Symmetry EXCELLENT
Fluorescence NONE
Inscription(s) LABGROWN IGI LG440012054

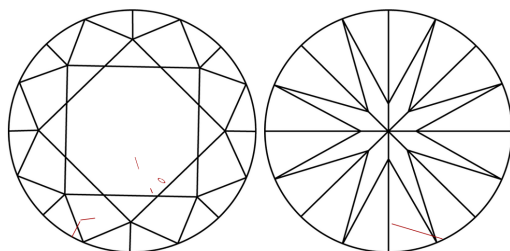


ADDITIONAL INFORMATION

PROPORTIONS



CLARITY CHARACTERISTICS



KEY TO SYMBOLS

Red symbols indicate internal characteristics.
Green symbols indicate external characteristics.

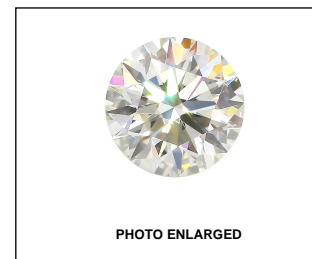
This Report is subject to the terms and conditions

© IGI 2000, edition 2019 all rights reserved.

GRADING SCALES

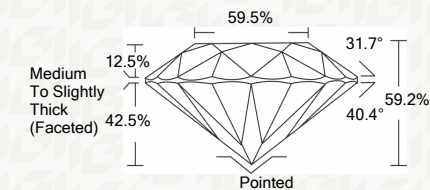
Table with 2 rows and 5 columns: COLOR GRADING SCALE (CL, NC, FT, VLT, LT) and CLARITY (10x) GRADING SCALE (FL, IF, VVS, VS, SI, I).

The laboratory grown diamond described in this Report (Report) has been graded, tested, analyzed, examined and/or inscribed by International Gemological Institute (IGI). A laboratory grown diamond is one that has essentially the same chemical, physical and optical properties as a mined diamond...



IGI LABORATORY GROWN DIAMOND GRADING REPORT

09/21/2020
IGI Report Number LG440012054
Shape and Cutting Style ROUND BRILLIANT
Measurements 8.44 - 8.47 X 5.00 MM
GRADING RESULTS
Carat Weight 2.20 CARATS
Color Grade I
Clarity Grade SI 2
Cut Grade EXCELLENT



ADDITIONAL GRADING INFORMATION

Polish EXCELLENT
Symmetry EXCELLENT
Fluorescence NONE
Inscription(s) LABGROWN IGI LG440012054



IGI

Summary table of report details: IGI Report No. LG440012054, ROUND BRILLIANT, 8.44 - 8.47 X 5.00 MM, 2.20 CARATS, Color Grade I, Clarity Grade SI 2, EXCELLENT, Depth 59.2%, Table 59.5%, Medium To Slightly Thick (Faceted), Pointed, EXCELLENT, EXCELLENT, NONE, LABGROWN IGI LG440012054.