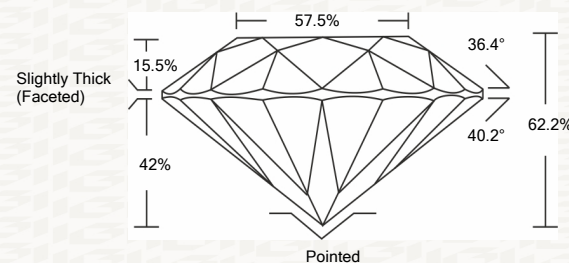




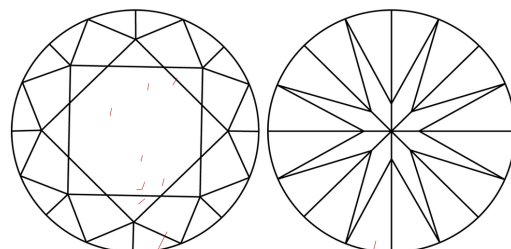
IGI GEMOLOGICAL REPORT

ADDITIONAL INFORMATION

PROPORTIONS



CLARITY CHARACTERISTICS



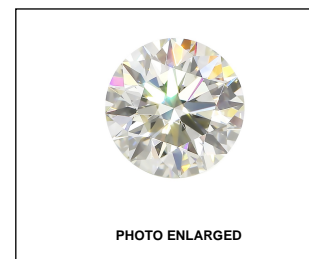
KEY TO SYMBOLS

Red symbols indicate internal characteristics. Green symbols indicate external characteristics.

GRADING SCALES

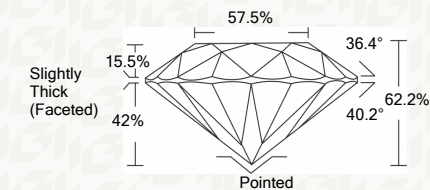
Table with 2 rows and 5 columns showing grading scales for Color and Clarity.

The laboratory grown diamond described in this Report (Report) has been graded, tested, analyzed, examined and/or inscribed by International Gemological Institute (I.G.I.).



IGI LABORATORY GROWN DIAMOND GRADING REPORT

09/22/2020 IGI Report Number LG440013497 Shape and Cutting Style ROUND BRILLIANT Measurements 7.26 - 7.30 X 4.54 MM GRADING RESULTS Carat Weight 1.51 CARAT Color Grade J Clarity Grade SI 1 Cut Grade EXCELLENT



ADDITIONAL GRADING INFORMATION

Polish EXCELLENT Symmetry EXCELLENT Fluorescence NONE Inscription(s) LABGROWN IGI LG440013497

IGI LABORATORY GROWN DIAMOND GRADING REPORT

09/22/2020 IGI Report Number LG440013497 Shape and Cutting Style ROUND BRILLIANT Measurements 7.26 - 7.30 X 4.54 MM

GRADING RESULTS

Carat Weight 1.51 CARAT Color Grade J Clarity Grade SI 1 Cut Grade EXCELLENT

ADDITIONAL GRADING INFORMATION

Polish EXCELLENT Symmetry EXCELLENT Fluorescence NONE Inscription(s) LABGROWN IGI LG440013497



This Report is subject to the terms and conditions

© IGI 2000, edition 2019 all rights reserved.



IGI

09/22/2020 IGI Report No. LG440013497 ROUND BRILLIANT 7.26 - 7.30 X 4.54 MM 1.51 CARAT J SI 1 EXCELLENT 62.2% 57.5% Slightly Thick (Faceted) Pointed EXCELLENT EXCELLENT NONE LABGROWN IGI LG440013497