



**INTERNATIONAL
GEMOLOGICAL
INSTITUTE**

ELECTRONIC COPY

LABORATORY GROWN DIAMOND REPORT

LG440020233

**IGI LABORATORY GROWN
DIAMOND ID REPORT**

09/12/2020

IGI Report Number **LG440020233**

EMERALD CUT

6.40 x 4.68 x 2.98 MM

Carat Weight 0.92 CARAT

Color Grade D

Clarity Grade SI 1

Polish EXCELLENT

Symmetry EXCELLENT

Fluorescence NONE

Inscription(s) LABGROWN IGI
LG440020233

Comments: This Laboratory grown diamond was created by high pressure high temperature process (HPHT)-
Type II

IGI GEMOLOGICAL REPORT

IGI LABORATORY GROWN DIAMOND IDENTIFICATION REPORT

09/12/2020

IGI Report Number **LG440020233**

Shape and Cutting Style **EMERALD CUT**

Measurements **6.40 x 4.68 x 2.98 MM**

GRADING RESULTS

Carat Weight 0.92 CARAT

Color Grade D

Clarity Grade SI 1

ADDITIONAL GRADING INFORMATION

Polish EXCELLENT

Symmetry EXCELLENT

Fluorescence NONE

Inscription(s) **LABGROWN IGI LG440020233**

Comments: This Laboratory grown diamond was created by high pressure high temperature process (HPHT) Type II



This Laboratory Grown Diamond (LGD) described in this Report has been analyzed, graded and Laserscribed® by International Gemological Institute (IGI). A LGD has essentially the chemical, physical and optical properties as a mined diamond, with the exception of being man-made (a manufactured product). LGD's are typically produced by CVD (chemical vapor deposition) or by HPHT (high pressure high temperature) growth processes and may include post growth modifications to change the color. IGI utilizes the most advanced techniques and equipment currently available including, binocular microscopes, diamond color masters, non-contact-optical measuring device, a wide range analytical techniques including FTIR, UV-VIS-NIR, raman spectroscopy, and fluorescence analysis at various excitation wavelengths. This Report includes advanced security features. This Report is neither a guarantee, valuation nor appraisal and by making the report IGI does not agree to purchase or replace the article.
INTERNATIONAL GEMOLOGICAL INSTITUTE, INC

For Terms & Conditions, please visit www.igi.org

ADDITIONAL INFORMATION

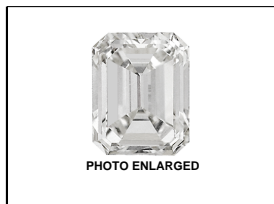
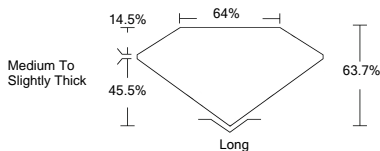


PHOTO ENLARGED



LABGROWN IGI LG440020233

LASERSCRIBESM



**IGI LABORATORY GROWN
DIAMOND ID REPORT**

09/12/2020

IGI Report Number **LG440020233**

EMERALD CUT

6.40 x 4.68 x 2.98 MM

Carat Weight 0.92 CARAT

Color Grade D

Clarity Grade SI 1

Polish EXCELLENT

Symmetry EXCELLENT

Fluorescence NONE

Inscription(s) LABGROWN IGI
LG440020233

Comments: This Laboratory grown diamond was created by high pressure high temperature process (HPHT)-
Type II

THE DOCUMENT WAS PRODUCED WITH THE FOLLOWING SECURITY MEASURES: SPECIAL DOCUMENT PAPER, INK SCREENS, WATERMARK BACKGROUND DESIGNS HOLOGRAM AND OTHER SECURITY FEATURES NOT LISTED AND DO EXCEED DOCUMENT SECURITY INDUSTRY GUIDELINES