



IGI GEMOLOGICAL REPORT

IGI LABORATORY GROWN DIAMOND GRADING REPORT

09/23/2020 IGI Report Number LG442048709

Shape and Cutting Style ROUND BRILLIANT

Measurements 6.72 - 6.75 X 4.18 MM

GRADING RESULTS

Carat Weight 1.16 CARAT

Color Grade E

Clarity Grade VS 1

Cut Grade IDEAL

ADDITIONAL GRADING INFORMATION

Polish EXCELLENT

Symmetry EXCELLENT

Fluorescence NONE

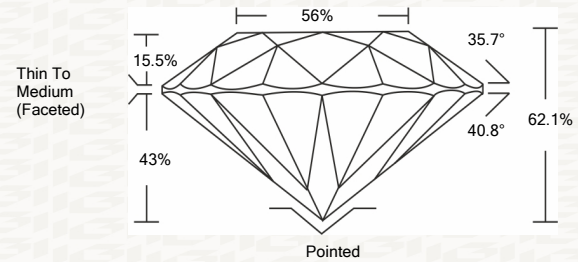
Inscription(s) LABGROWN IGI LG442048709

Comments: This Laboratory grown diamond was created by chemical vapor deposition process (CVD) Type IIa

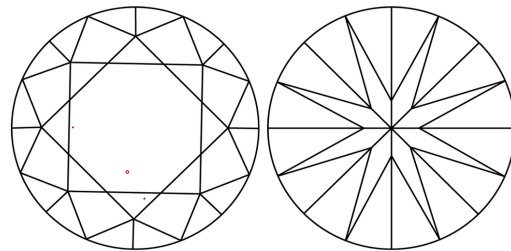


ADDITIONAL INFORMATION

PROPORTIONS



CLARITY CHARACTERISTICS



KEY TO SYMBOLS

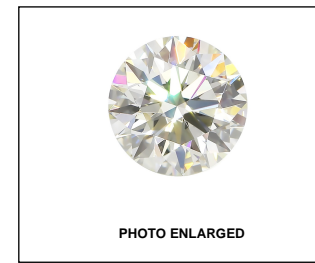
Red symbols indicate internal characteristics. Green symbols indicate external characteristics.

This Report is subject to the terms and conditions © IGI 2000, edition 2019 all rights reserved.

GRADING SCALES

Table with 5 columns: COLOR GRADING SCALE (CL, NC, FT, VLT, LT) and CLARITY (10x) GRADING SCALE (FL, IF, VVS, VS, SI, I).

The laboratory grown diamond described in this Report (Report) has been graded, tested, analyzed, examined and/or inscribed by International Gemological Institute (IGI). A laboratory grown diamond is one that has essentially the same chemical, physical and optical properties as a mined diamond...



IGI LABORATORY GROWN DIAMOND GRADING REPORT

09/23/2020 IGI Report Number LG442048709

Shape and Cutting Style ROUND BRILLIANT

Measurements 6.72 - 6.75 X 4.18 MM

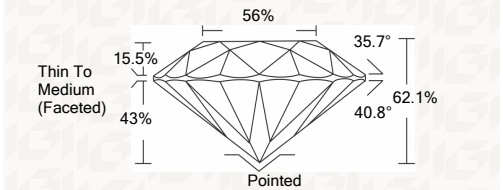
GRADING RESULTS

Carat Weight 1.16 CARAT

Color Grade E

Clarity Grade VS 1

Cut Grade IDEAL



ADDITIONAL GRADING INFORMATION

Polish EXCELLENT

Symmetry EXCELLENT

Fluorescence NONE

Inscription(s) LABGROWN IGI LG442048709

Comments: This Laboratory grown diamond was created by chemical vapor deposition process (CVD) Type IIa



IGI

09/23/2020 IGI Report No. LG442048709 ROUND BRILLIANT 6.72 - 6.75 X 4.18 MM 1.16 CARAT E VS 1 IDEAL 62.1% 56% Thin To Medium (Faceted) Pointed EXCELLENT EXCELLENT NONE LABGROWN IGI LG442048709 Comments: This Laboratory grown diamond was created by chemical vapor deposition process (CVD) Type IIa