



IGI GEMOLOGICAL REPORT

IGI LABORATORY GROWN DIAMOND GRADING REPORT

09/27/2020

IGI Report Number LG442066233

Shape and Cutting Style PRINCESS CUT

Measurements 7.04 X 6.95 X 4.90 MM

GRADING RESULTS

Carat Weight 2.09 CARATS

Color Grade J

Clarity Grade VS 1

ADDITIONAL GRADING INFORMATION

Polish EXCELLENT

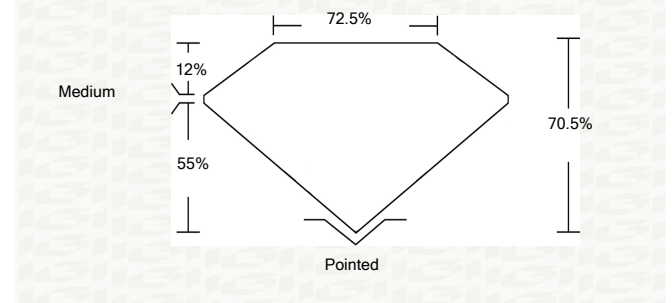
Symmetry EXCELLENT

Fluorescence NONE

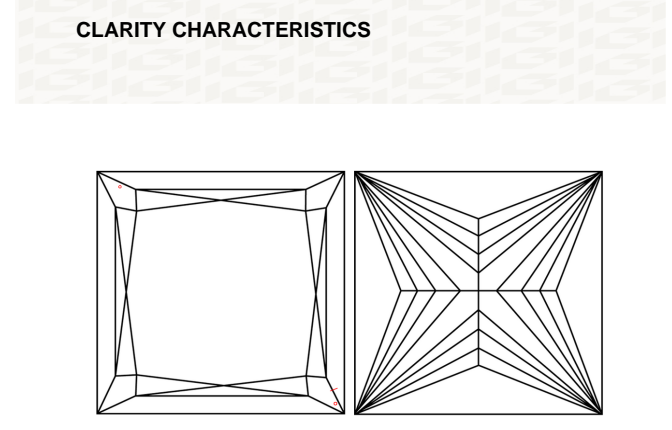
Inscription(s) LABGROWN IGI LG442066233

ADDITIONAL INFORMATION

PROPORTIONS



CLARITY CHARACTERISTICS



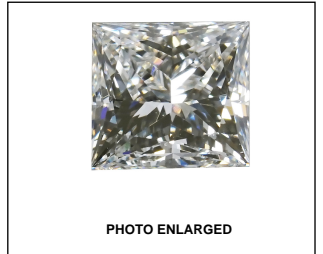
KEY TO SYMBOLS

Red symbols indicate internal characteristics. Green symbols indicate external characteristics.

GRADING SCALES

Table with 5 columns for Color Grading Scale (CL, NC, FT, VLT, LT) and Clarity (10x) Grading Scale (FL, IF, VVS, VS, SI, I).

The laboratory grown diamond described in this Report (Report) has been graded, tested, analyzed, examined and/or inscribed by International Gemological Institute (IGI). A laboratory grown diamond is one that has essentially the same chemical, physical and optical properties as a mined diamond...



LABGROWN IGI LG442066233 LASERSCRIBE SM



IGI LABORATORY GROWN DIAMOND GRADING REPORT

09/27/2020

IGI Report Number LG442066233

Shape and Cutting Style PRINCESS CUT

Measurements 7.04 X 6.95 X 4.90 MM

Carat Weight 2.09 CARATS

Color Grade J

Clarity Grade VS 1

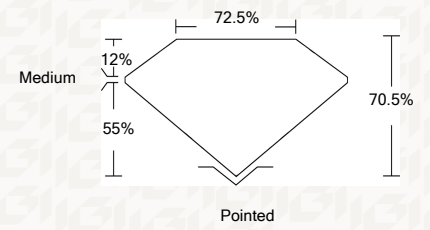
ADDITIONAL GRADING INFORMATION

Polish EXCELLENT

Symmetry EXCELLENT

Fluorescence NONE

Inscription(s) LABGROWN IGI LG442066233



LABGROWN IGI LG442066233 LASERSCRIBE SM



IGI



This Report is subject to the terms and conditions

© IGI 2000, edition 2019 all rights reserved.

THE DOCUMENT WAS PRODUCED THE FOLLOWING SECURITY MEASURES: SPECIAL DOCUMENT PAPER, INK SCREENS, WATERMARK, BACKGROUND DESIGNS, HOLOGRAM AND OTHER SECURITY FEATURES NOT LISTED AND DO EXCEED DOCUMENT SECURITY INDUSTRY DUDLINES

Summary table of report details: IGI Report No LG442066233, PRINCESS CUT, 7.04 X 6.95 X 4.90 MM, 2.09 CARATS, Color Grade J, Clarity Grade VS 1, Depth 70.6%, Table 72.8%, Medium Polish, EXCELLENT Symmetry, EXCELLENT Fluorescence, NONE, LABGROWN IGI LG442066233