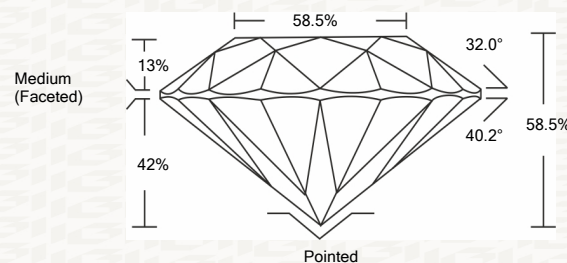




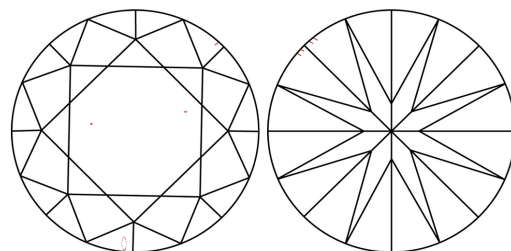
IGI GEMOLOGICAL REPORT

ADDITIONAL INFORMATION

PROPORTIONS



CLARITY CHARACTERISTICS



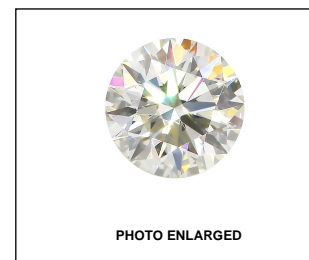
KEY TO SYMBOLS

Red symbols indicate internal characteristics. Green symbols indicate external characteristics.

GRADING SCALES

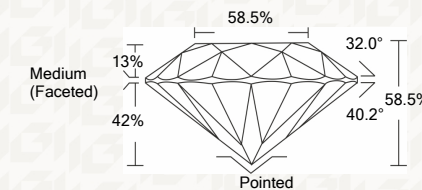
Table with 2 rows and 5 columns: COLOR GRADING SCALE (CL, NC, FT, VLT, LT) and CLARITY (10x) GRADING SCALE (FL, IF, VVS, VS, SI, I)

The laboratory grown diamond described in this Report (Report) has been graded, tested, analyzed, examined and/or inscribed by International Gemological Institute (I.G.I.)...



IGI LABORATORY GROWN DIAMOND GRADING REPORT

10/05/2020 IGI Report Number LG442067246 Shape and Cutting Style ROUND BRILLIANT Measurements 8.89 - 8.91 X 5.20 MM GRADING RESULTS Carat Weight 2.51 CARATS Color Grade J Clarity Grade VS 1 Cut Grade EXCELLENT



ADDITIONAL GRADING INFORMATION

Polish EXCELLENT Symmetry EXCELLENT Fluorescence NONE Inscription(s) LABGROWN IGI LG442067246



IGI

IGI LABORATORY GROWN DIAMOND GRADING REPORT

10/05/2020 IGI Report Number LG442067246 Shape and Cutting Style ROUND BRILLIANT Measurements 8.89 - 8.91 X 5.20 MM

GRADING RESULTS

Carat Weight 2.51 CARATS Color Grade J Clarity Grade VS 1 Cut Grade EXCELLENT

ADDITIONAL GRADING INFORMATION

Polish EXCELLENT Symmetry EXCELLENT Fluorescence NONE Inscription(s) LABGROWN IGI LG442067246



This Report is subject to the terms and conditions

© IGI 2000, edition 2019 all rights reserved.

THE DOCUMENT WAS PRODUCED THE FOLLOWING SECURITY MEASURES: SPECIAL DOCUMENT PAPER, INK SCREENS, WATERMARK, BACKGROUND DESIGNS, HOLOGRAM AND OTHER SECURITY FEATURES NOT LISTED AND DO EXCEED DOCUMENT SECURITY INDUSTRY DUDLINES

Summary table of report details: 10/05/2020 IGI Report No. LG442067246 ROUND BRILLIANT 8.89 - 8.91 X 5.20 MM 2.51 CARATS J VS 1 EXCELLENT 88.5% 88.5% Medium (Faceted) Pointed EXCELLENT EXCELLENT NONE LABGROWN IGI LG442067246